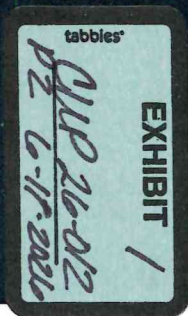
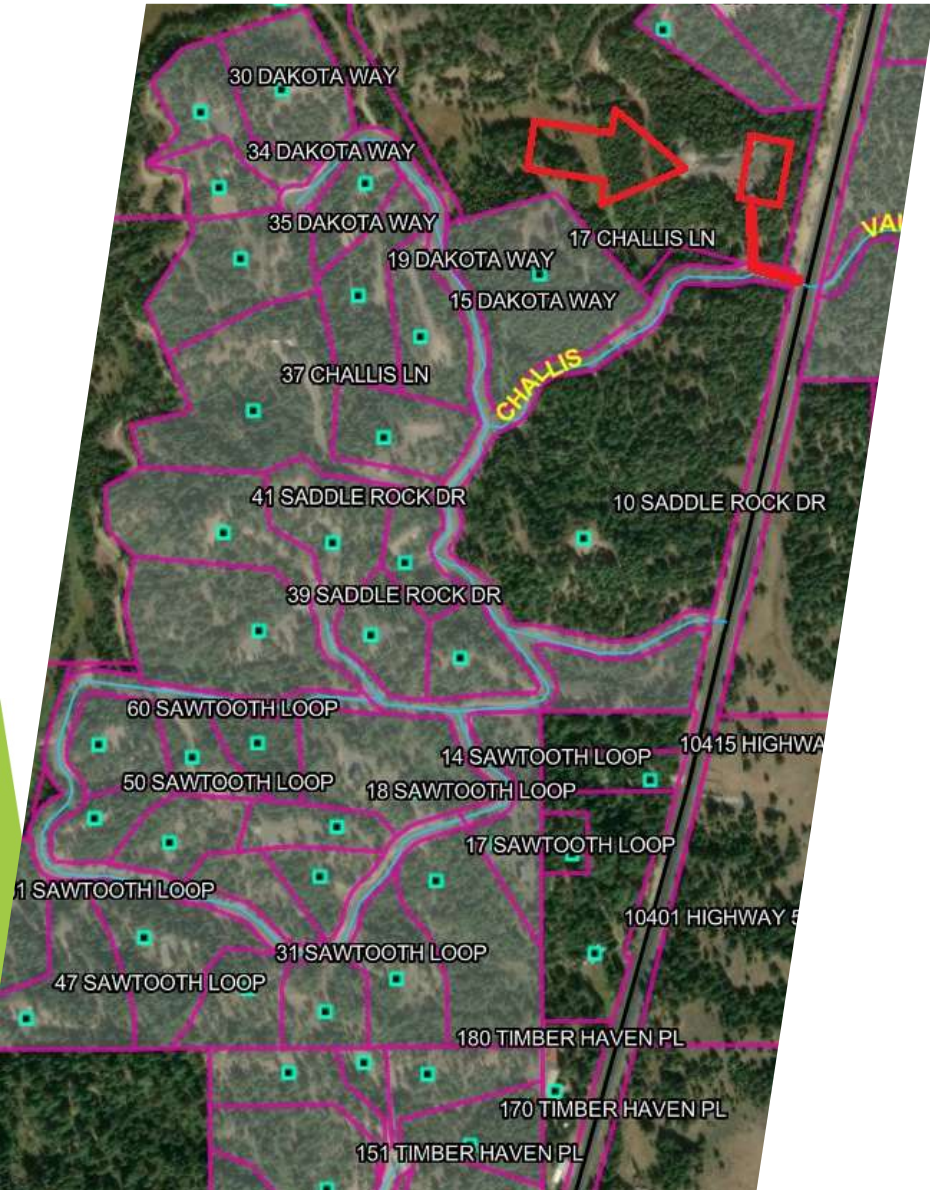


# CUP 26-012 | Propane Storage Site

- ▶ Applicant: Saddle Rock LLC
- ▶ Heidi & Ryan Schneider





# Project Location





# Proposed Lease Area





## Access & Road System

- ▶ 120' Feet of Private Road Utilized
- ▶ Approximately 0.4% of Total Road Network
- ▶ Direct Access From Highway 55 to Challis Lane
- ▶ Applicant Owns Private Roads
- ▶ Road Declaration Allows Additional Properties to Utilize Road System
- ▶ Lessee Will Contribute to Private Road Maintenance.



### Access & Screening

The proposed site is fully screened from public view and is not visible from Highway 55, any roadway within Saddle Rock Subdivision, or any residential lot. Existing topography and vegetation provide complete visual buffering.

# Proposed Operation

- No retail sales
- No public access
- No lighting



► Empty Storage Tanks



► Bobtail Truck



► 30,000-gallon storage tank



Propane plays a critical role in serving Valley County residents, businesses, schools, and public facilities. As a result, propane storage facilities are located throughout the county in a variety of settings, including residential neighborhoods, commercial districts, downtown areas, and along HWY 55. The facilities shown above are existing examples currently operating within Valley County.