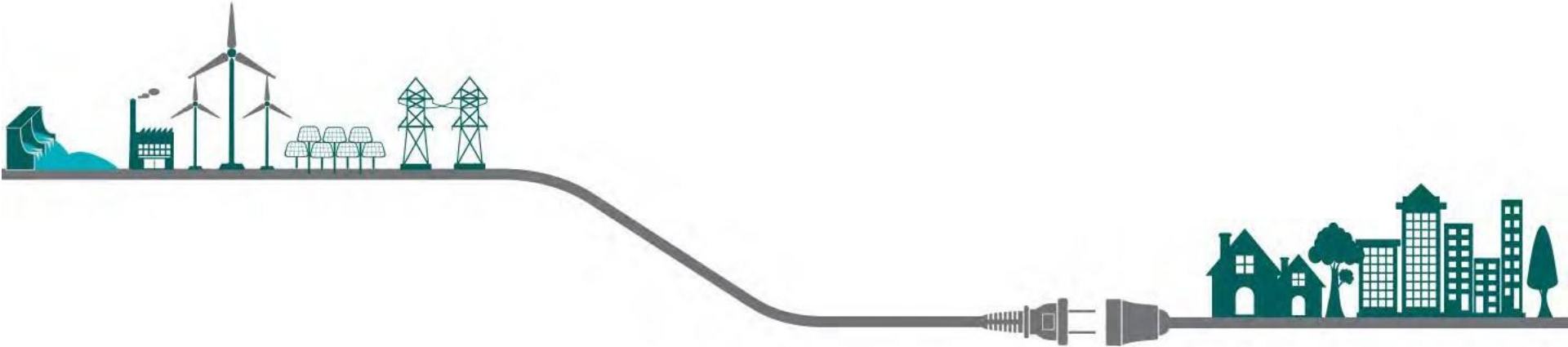


CUP 25-020 Public Hearing

Stibnite Substation



September 11, 2025

Leon Letson

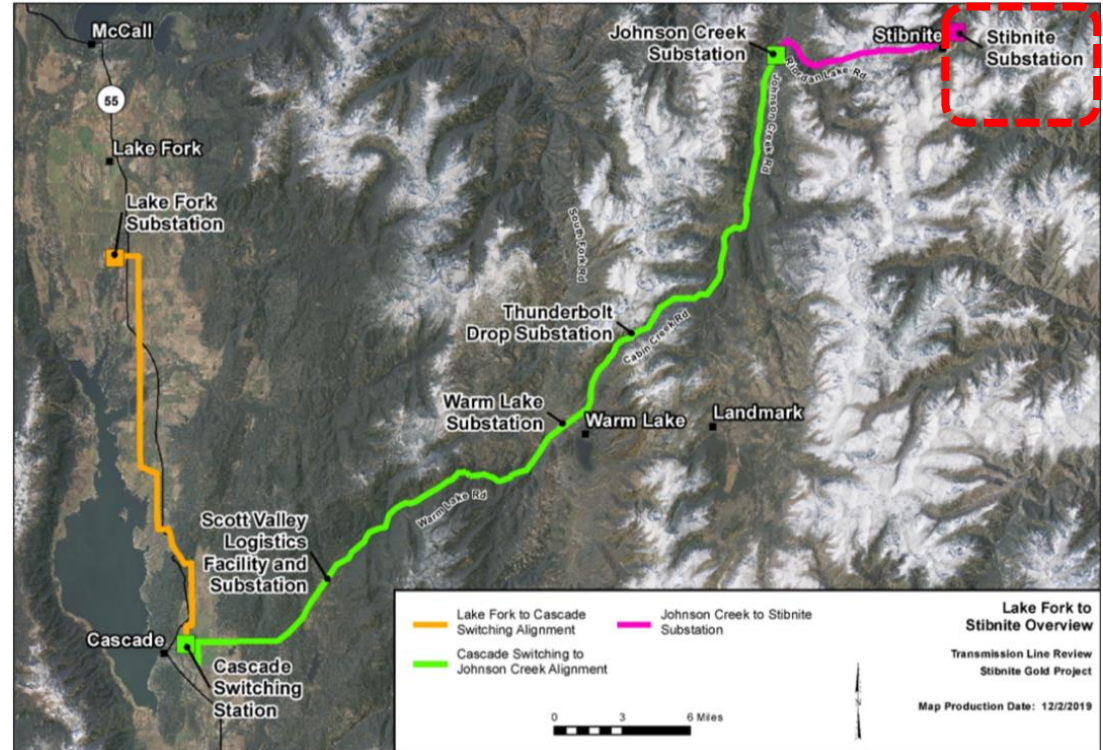
Project Objective

- ✓ Increase electrical capacity for Valley County and the Stibnite Gold Project.
- ✓ Reinforce the electrical system.
- ✓ Improve reliability and resiliency.
- ✓ Minimize impacts to the surrounding area through siting and station design.
- ✓ 100% funded by the developers of the Stibnite Gold Project.

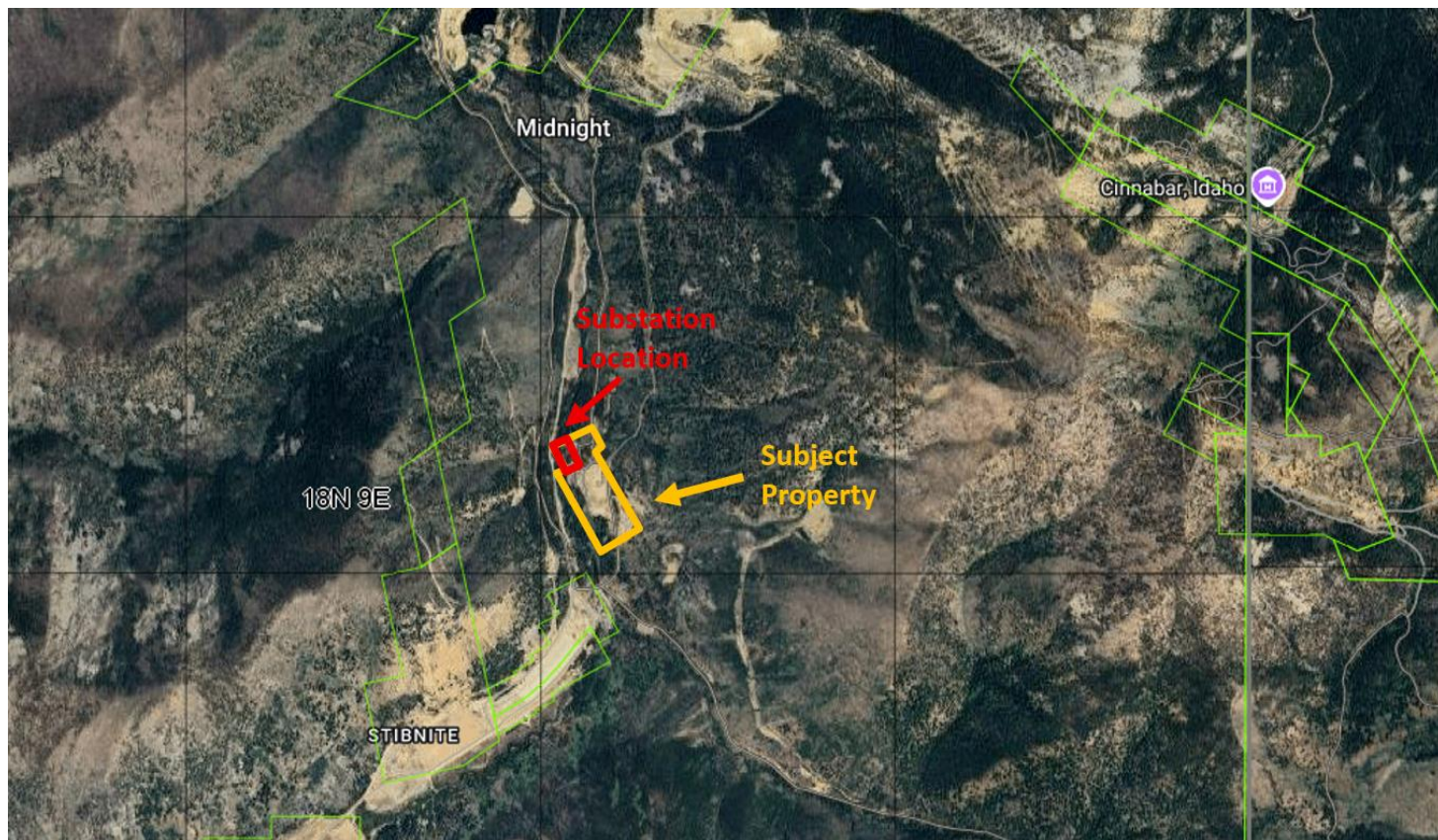


Project Area

- Located along Line 328 for easy connections into grid.
- Located to most effectively serve Stibnite Gold project needs.
- Located more than 8 miles from scenic highway corridor.
- Appropriately-sized 4-acre portion of a 54-acre parcel.

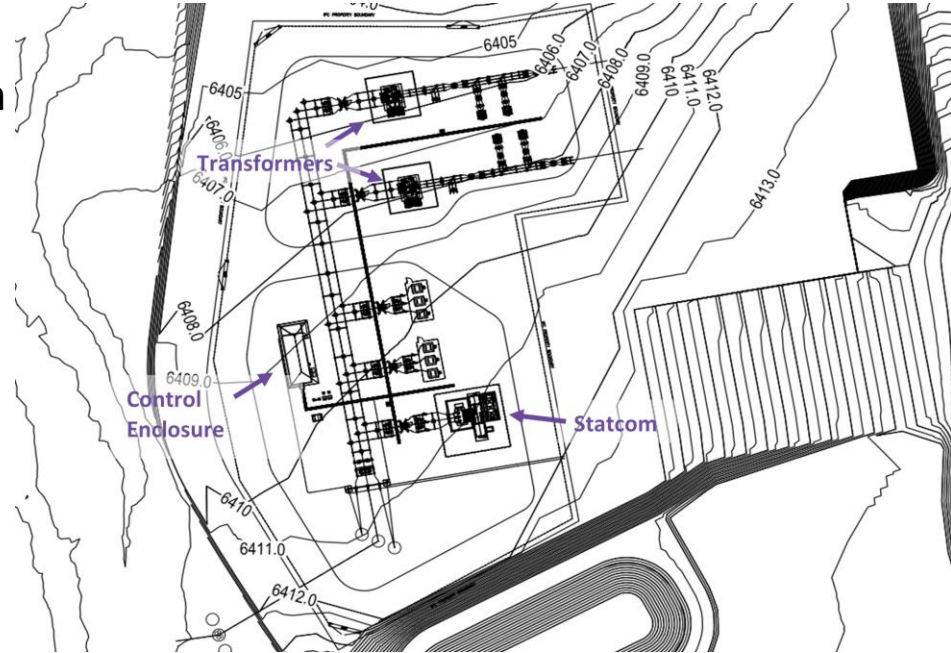


Project Location



Project Features

- Retention of existing lodgepole pine for landscaping/screening along Stibnite Road and 8-ft tall chain-link perimeter fence with four (4) 30-ft gates.
- Two (2) transformers to connect distribution feeders for customers. Five (5) breakers and other apparatus to manage power flows.
- 60-ft by 20-ft concrete masonry control enclosure.
- Station driveway and yard will be gravel.
- Station will be secured from public entry.



Standards Evaluation



- ✓ This location is most suitable in terms of acquisition, adjacent land uses, electrical system connections, and minimal impacts (this property has been previously disturbed).
- ✓ With requested minor modifications to the conditions of approval, the substation has been designed to be compatible with zoning and setback standards, and site-obscuring methods have been taken to reduce visual impacts.
- ✓ No undesirable effects such as odors, fumes, vibrations, or noise during operations.
- ✓ No undo impacts to adjacent properties, traffic, wetlands, habitats, vegetation or water.

Conditions Evaluation

- ✓ Idaho Power will meet all Conditions of the permit in the Staff Report.
- ✓ Idaho Power requests the following condition modifications:
 - Condition #4 (established use) be changed from 1 year to 3 years:
 - *The CUP approval is necessary right now to complete the purchase process.*
 - *Construction planned to start in 2027 and will require almost a year to complete several complex steps.*
 - *Idaho Power expects to have this station operating by early 2028.*
 - Condition #17 (fencing) be changed to allow a maximum fence height of 8' within the setbacks or seek a variance from the Board of County Commissioners:
 - *The National Electric Safety Code (NESC) Rule 110.A.1 requires a minimum fence height of 7'.*
 - *IPC Specification 95-120 requires a minimum fence height of 7' plus 1' of barbed wire stranding located on top of or inside of the fence.*

BACKUP SLIDES AS NEEDED...



Project Location

