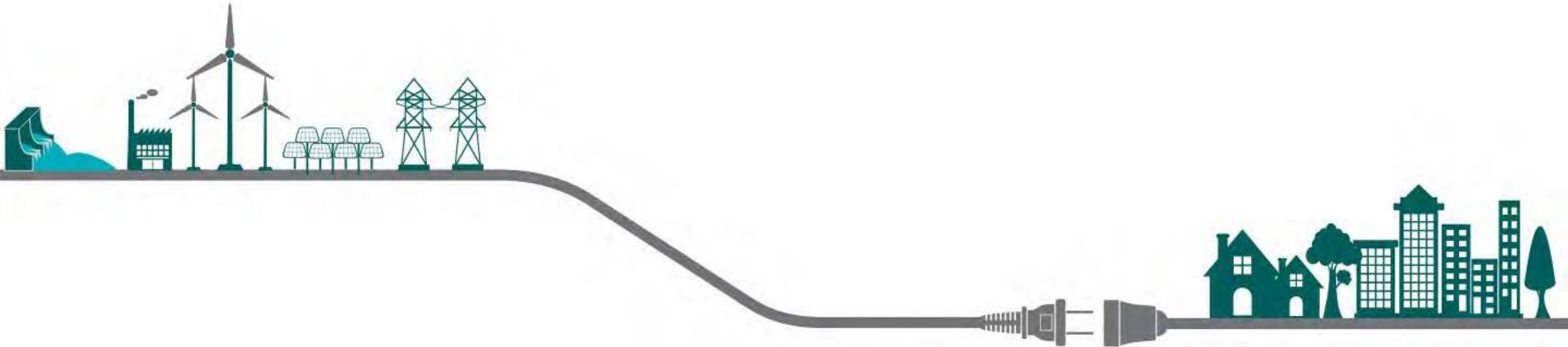


CUP 25-018 Public Hearing

Cascade Switching Station



September 11, 2025

Leon Letson

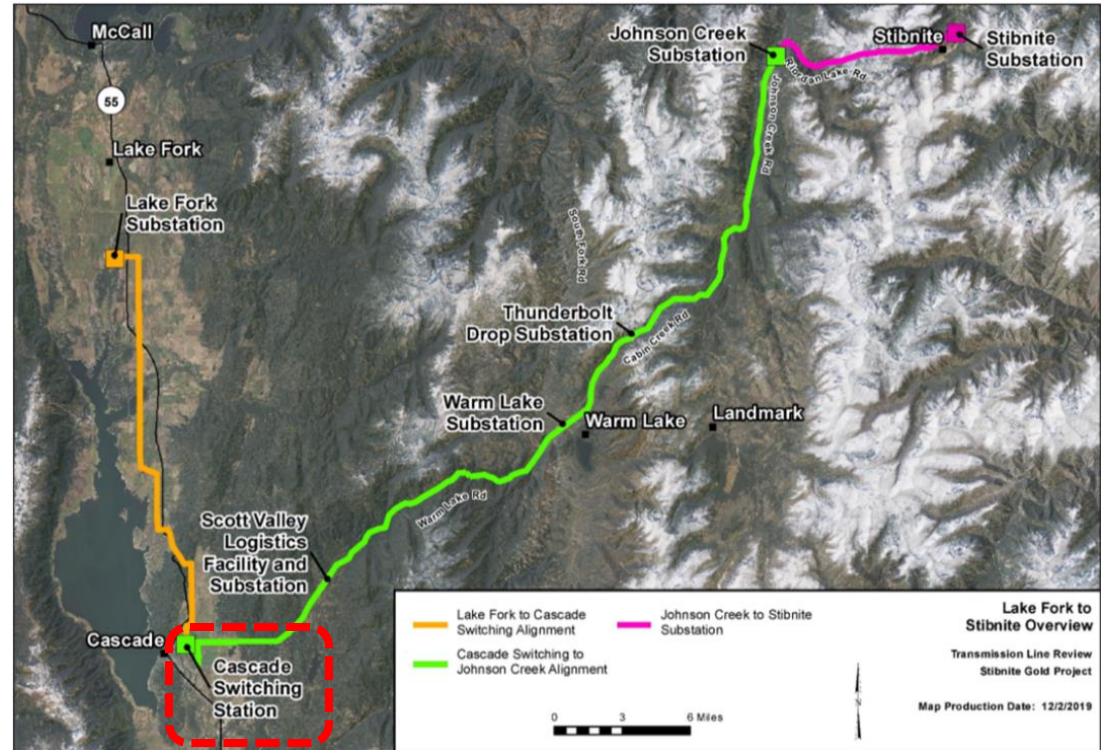
Project Objective

- ✓ Increase electrical capacity for Valley County and the Stibnite Gold Project.
- ✓ Reinforce the electrical system.
- ✓ Improve reliability and resiliency.
- ✓ Minimize impacts to the surrounding area through siting and station design.
- ✓ 100% funded by Perpetua Resources.



Project Area

- Located so existing transmission lines can be easily connected.
- Located to most effectively serve the Stibnite Gold Project needs.
- Located more than 2,500' from a scenic highway corridor.
- Appropriately-sized 5.5-acre parcel.

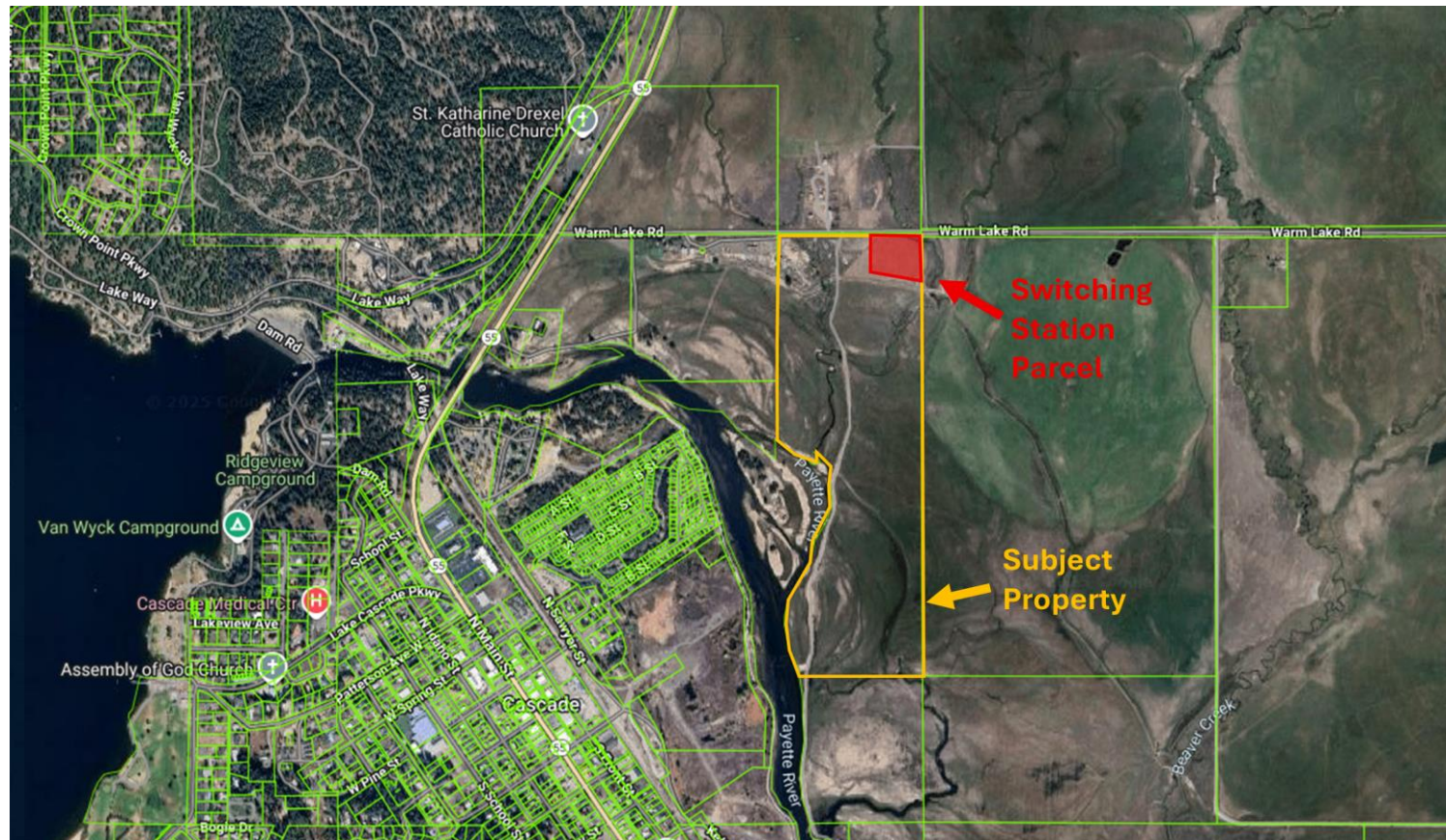


Project Location

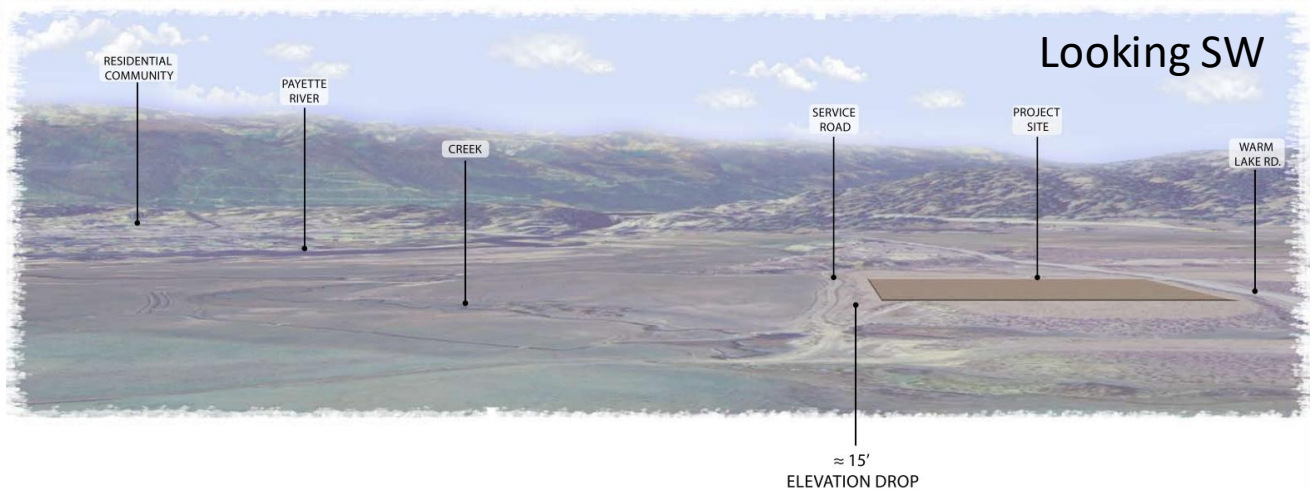


- The substation is located Warm Lake Road, approximately 2,800 feet east of State Highway 55.
- Idaho Power, thru Perpetua Resources, will acquire an approximately 5.5-acre parcel from the 112.3-acre property owned by Davis Cattle Company Inc.
- Site constraints include topography, ranch irrigation lines, a creek, and the need to maintain access west of the substation for an active cattle ranching operation.
- Nearest residence not owned by Davis Cattle Company Inc. is more than 2300' to the southwest.

Project Location

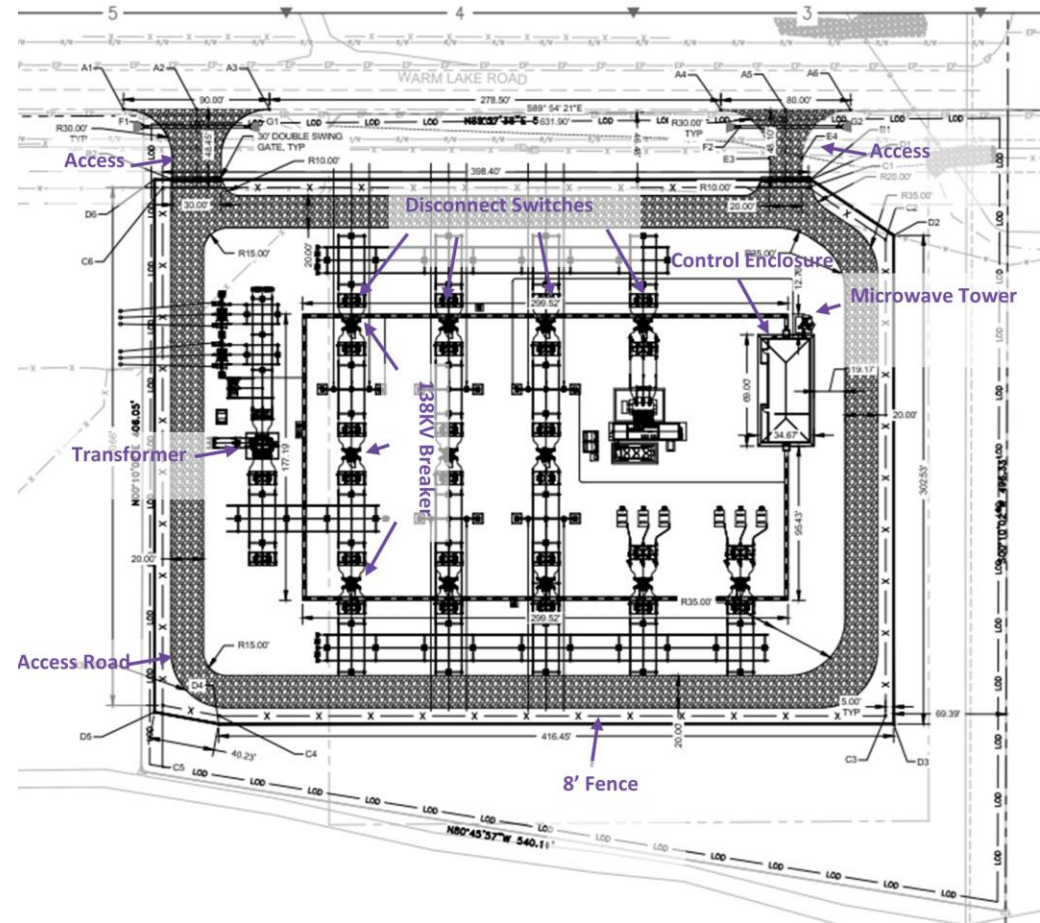


Project Location

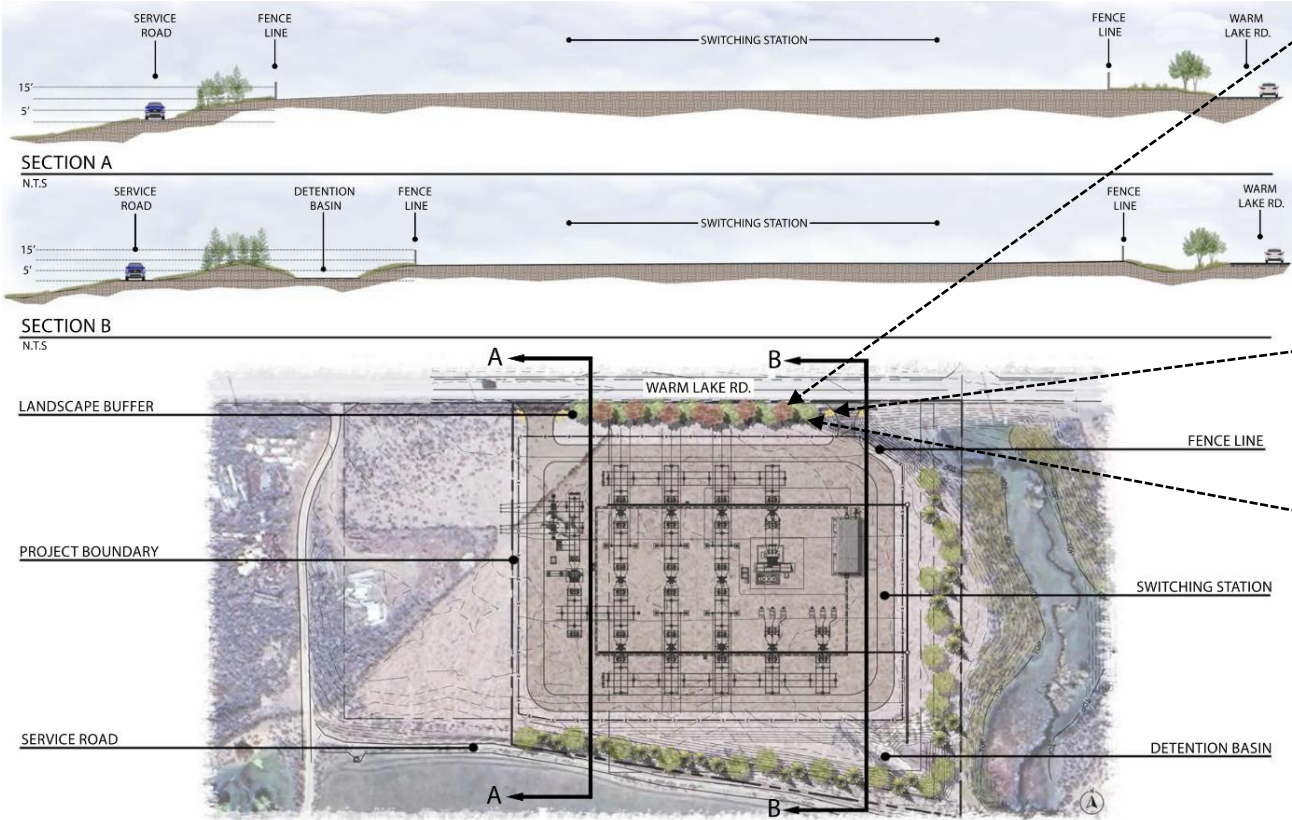


Project Features

- Station will be landscaped along Warm Lake Road and obscured from Highway 55.
- Tallest structures are the "dead-end" poles connecting the existing transmission line into the substation.
- 8-ft tall chain-link perimeter fence with two 30-ft gates.
- Station driveway and yard will be gravel.
- Station will be secured from public entry.



Project Features



CANADA RED CHOKECHERRY



ARROWLEAF BALSAMROOT



AUTUMN BRILLIANCE SERVICEBERRY

Standards Evaluation



- ✓ This location is most suitable in terms of acquisition, adjacent land uses, electrical system connections, and minimal impacts (this property has been previously disturbed).
- ✓ With requested minor modifications to the conditions of approval, the station has been designed to be compatible with zoning and setback standards, and site-obscuring methods have been taken to reduce visual impacts.
- ✓ No undesirable effects such as odors, fumes, vibrations, or noise during operations.
- ✓ No undo impacts to adjacent properties, traffic, habitats, vegetation or water.

Conditions Evaluation

- ✓ Idaho Power will meet all Conditions of the permit in the Staff Report.
- ✓ Idaho Power requests the following condition modifications:
 - Condition #4 (establish use) be changed from 1 year to 3 years:
 - *The CUP approval is necessary right now to complete the purchase process.*
 - *Construction planned to start in 2027 and will require almost a year to complete several complex steps.*
 - *Idaho Power expects to have this station operating by Early 2028.*
 - Condition #17 (fencing) be changed to allow a maximum fence height of 8' within the setbacks or seek a variance from the Board of County Commissioners:
 - *The National Electric Safety Code (NESC) Rule 110.A.1 requires a minimum fence height of 7'.*
 - *IPC Specification 95-120 requires a minimum fence height of 7' plus 1' of barbed wire stranding located on top of or inside of the fence.*

BACKUP SLIDES AS NEEDED...



Project Location



South end of Leisure Time



Waters Edge (first RV park)

Project Location



North end of Leisure Time

Project Location

