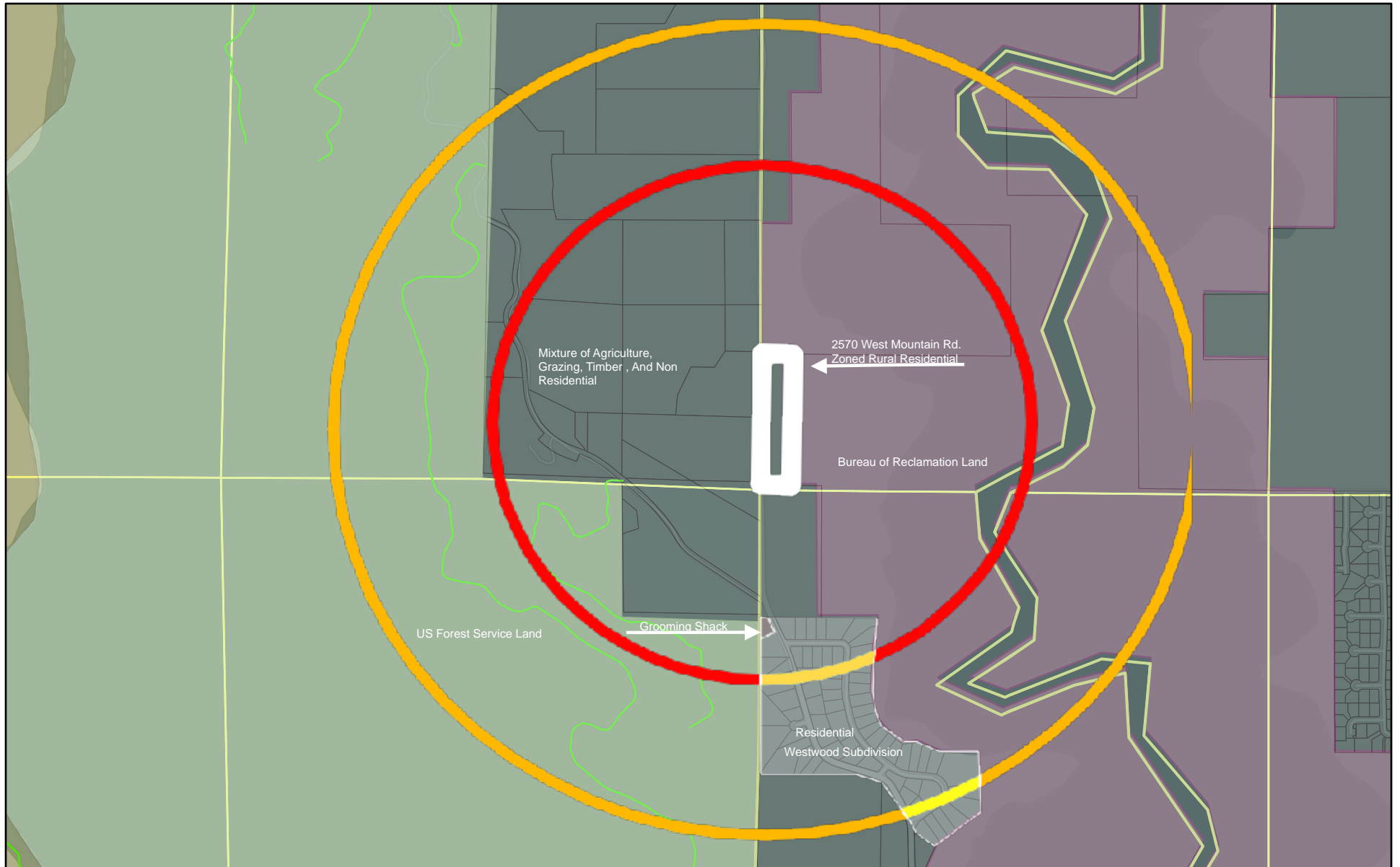
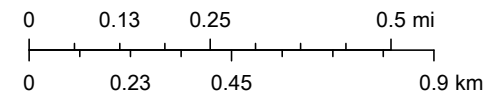


# 2570 W Mountain RD-Copy

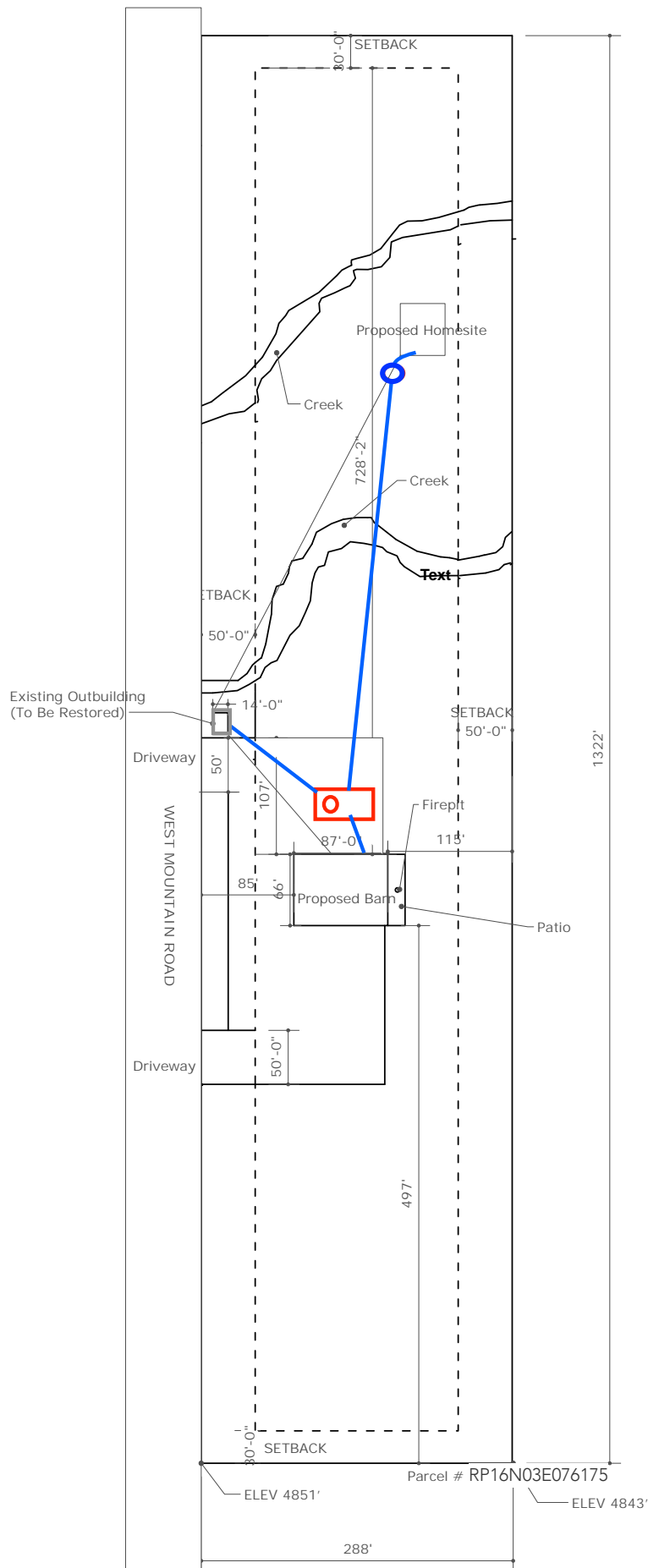





2/19/2022

1:23,623



Esri Canada, Esri, HERE, Garmin, SafeGraph, GeoTechnologies, Inc., METI/



-  In-Ground Transfer Pump
-  1500 Gal In-Ground Tank with Transfer Pump
-  WC64 Incinerator

Note: No trees or Boulders exist within any of the building or grading areas.



Scale: 1"=100' (1:1200)









Looking south



Looking to north





[Site Map](#)[Payette National Forest](#)[Home](#)[Special Places](#)[Recreation](#)[Alerts & Notices](#)[Passes & Permits](#)[Recreation Passes  
& Permits](#)[Forest Products  
Permits](#)[Event/Commercial  
Permits](#)[Other Permits](#)[Maps & Publications](#)[Land & Resources  
Management](#)[Learning Center](#)[Working Together](#)[About the Forest](#)[News & Events](#)[Contact Information](#)

**Payette National Forest**  
500 N Mission St Building 2  
McCall, ID 83638  
(208) 634-0700

[Contact Us](#)[Event/Commercial Permits](#)**Wedding - Reunions - Sporting  
Events - Festivals -  
Outfitters/Guides**

Permits for events such as weddings, family reunions (outside of developed recreation sites), sporting events, festivals and such are required.

In addition, commercial activities such as outfitter and guide services, are required to obtain a special use permit.

For commercial photography and film-making, and many types of research permits, refer to **Other & Land Use Permits** for more information.



give us a call!

If you are planning for an event and wish to host your event on the Payette National Forest, please call our Special Uses Program Manager at 208-634-0446. We certainly know that you don't want to plan an event, only to find out at the last minute a permit is needed. If you are in doubt about the need for a permit, or have questions about the permitting process, please

**📌 Keep COVID-19 on the run: wash hands frequently, practice social distancing when possible, and respect the needs of others. [Details](#).**

**🏠 Home** (<https://parksandrecreation.idaho.gov/>) / **Activities** (<https://parksandrecreation.idaho.gov/>) / Group Events/Weddings

Top Parks for Your Special Event

How would you like your own private knoll overlooking a lake for your next family reunion? Or have a completely unique and inspiring location to host a corporate retreat or a breath-taking setting for your wedding. If you’re planning a reunion, corporate retreat or wedding, Idaho State Parks have wonderful opportunities for friends, families and organizations to come together to celebrate, learn and love.

Most Idaho State Parks can accommodate group activities of 25 to 100 people. The following parks have special accommodations for groups.

For specific information about planning your special gathering in an Idaho State Park, please contact the park directly. [Reunions/Retreats/Weddings](#)

**Ponderosa State Park** (<https://www.parksandrecreation.idaho.gov/parks/ponderosa>) – weddings, receptions, group cabins

**Old Mission State Park** (<https://www.parksandrecreation.idaho.gov/parks/coeur-d-alenes-old-mission>) – weddings, receptions

**Harriman State Park** (<https://www.parksandrecreation.idaho.gov/parks/harriman>) – weddings, dormitories, cooking facilities, conference room

**Dworshak State Park** (<https://www.parksandrecreation.idaho.gov/parks/dworshak>) – group cabins, lodge, cooking facilities

**Farragut State Park** (<https://www.parksandrecreation.idaho.gov/parks/farragut>) – special areas for any-size groups; group camping

**Priest Lake State Park** (<https://www.parksandrecreation.idaho.gov/parks/priest-lake>) – group cabins

**Castle Rocks State Park** (<https://www.parksandrecreation.idaho.gov/node/88>) – weddings, receptions, shelter, lodge and bunkhouse

[Group camping/yurts](#)

**Bruneau Dunes State Park** (<https://www.parksandrecreation.idaho.gov/parks/bruneau-dunes>) – Eagle Cove Campground

**Farragut State Park** (<https://www.parksandrecreation.idaho.gov/parks/farragut>) – Camp Waldron (all loops)

**Hells Gate State Park** (<https://www.parksandrecreation.idaho.gov/parks/hells-gate>) – Campground Loop B

**Heyburn State Park** (<https://www.parksandrecreation.idaho.gov/parks/heyburn>)– Hawleys Landing and Chatcolet Campgrounds

**Lake Cascade State Park** (<https://www.parksandrecreation.idaho.gov/parks/lake-cascade>) – Overlook loop in Sugarloaf Campground, group yurts, RV spaces

**Priest Lake State Park-** (<https://www.parksandrecreation.idaho.gov/parks/priest-lake>) sites 1 through 30 in the White Pine Campground

**Ponderosa** (<https://www.parksandrecreation.idaho.gov/parks/ponderosa>) – RV Group Campground

**Three Island State Park** (<https://www.parksandrecreation.idaho.gov/parks/three-island-crossing>) – Must use the lower loop (Trailside Campground)

**Idaho City Trail and Yurt System** (<https://www.parksandrecreation.idaho.gov/idaho-city-yurts>)

[Frequently Asked Questions about Group Events](#)

Q. If I have a group that requires fewer than 7 campsites and/or individual facilities, how do I make a reservation?

A. Make your reservations through the Idaho State Parks Call Center (888) 922-6743. Note that full payment by credit card at the time of booking or payment by check within 14 days will be required for Call Center reservations. In every instance, the name, address, and phone number of each occupant will be required at the time of booking a reservation for fewer than 7 individual campsites or facilities.

Q. Do I need to have a group leader to reserve blocks of 7 or more campsites and/or individual camping facilities (camping cabins, yurts, etc.)?

A. Yes, group leaders are responsible for making the reservation, coordinating all of the details of what is needed and when, and disseminating all information relating to your reservation to the rest of the group members.

Q. I am a group leader and I need 7 or more campsites and/or individual facilities (camping cabins, yurts, etc.). What information do I need to have before I contact the Call Center?

A. You need to have the following information:

- Preferred park for your group camping event (1st choice/2nd choice)
- Arrival and departure dates
- Number of people in your group
- Number of campsites or individual facilities needed
- Need to reserve group-use areas such as playing fields, shelters, amphitheaters, bonfire pits, etc.
- Payment information (Note: if paying at the time of booking, credit card number. If not, check(s) or individual credit card paymentss must be made within 14 days of making your group reservation. Unpaid reservations will be cancelled after 14 days)

Q. I’m ready to make my reservation, what is my next step?

A. Call the Call Center at 1 (888) 922-6743. Confirm that you wish to make a “group reservation”. Take care to identify the name of your group (your group members will need to refer to this name when speaking with Call Center agents or park staff about your reservation).



Q. Once I have reserved a block of campsites or individual facilities, how do I make sure that everyone in my group knows where they will be staying?

A. The group may choose to leave the entire reservation (all individual campsites and facilities) under the name of the group leader, or they may choose to have each individual member of the group contact the Call Center to obtain individual campsite and facility assignments within the block already reserved by the group leader, and make individual payments.

- First Option – If the reservation is to be managed under the group leader’s name, the group leader is responsible to ensure that all payments for all campsites and facilities reserved are made within the timeframes required. Individual discounts (RV Sticker Holders, Disabled Idaho Veteran, etc.) cannot be honored at the time of reservation, but may be applied upon check-in.
- Second Option – Each member of the group must contact the Call Center individually to obtain a campsite or facility assignment and make payment. Individual discounts (RV Holder, Disabled Idaho Veteran, etc.) will be honored in this case.

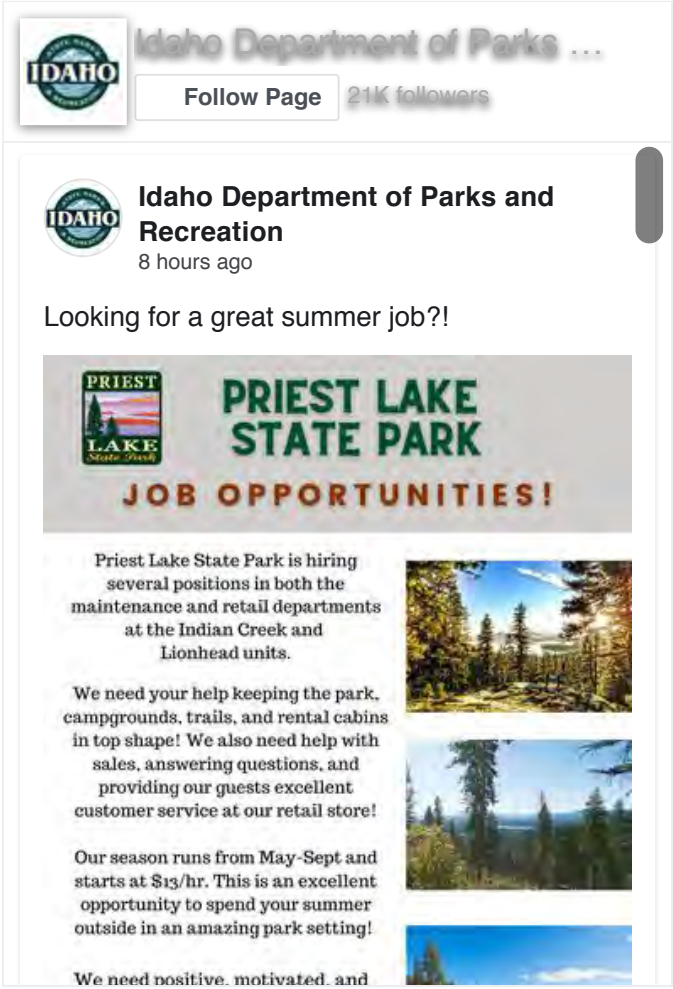
Q. When members of my group call the Call Center to make arrangements, what information will they need to provide?

A. When you or any member of your group contacts the Call Center to secure an individual site assignment and make payment, it is important that they provide the following information:

- Group reservation number
- Group name or group leader’s name and phone number
- Arrival and departure dates
- Preferred site (contingent upon availability).
- The camper’s name, phone number, and full mailing address
- Note: Payment must be provided at the time a site assignment is made

All information and full payment for each individual campsite or facility comprising the group reservation are due within 14 days of when the original group reservation was made. Unpaid portions of the reservation will be automatically cancelled.

Visit [Trails.Idaho.gov](https://trails.idaho.gov) (<https://trails.idaho.gov>)



Upcoming Events

No Upcoming Events

**See All Events** (<https://parksandrecreation.idaho.gov/calendar/>)







# SepticJohn

## Septic Alternative Wastewater Incinerator System

ECOJOHN has solutions that can be installed without any environmental impacts. No holding tanks need to be installed in the ground and the systems can process all black and greywater.

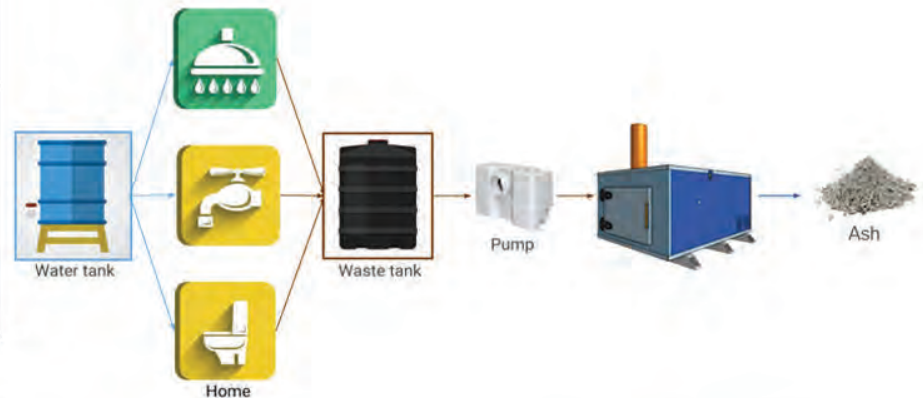
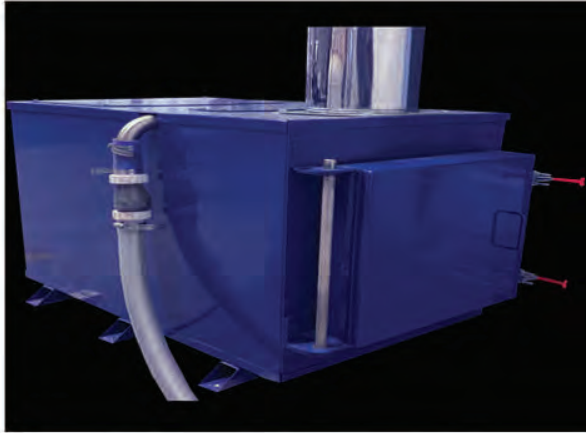
[www.ecojohn.com](http://www.ecojohn.com)

**ECOJOHN**



## How does it work

All fixtures inside your house or building, including toilets, bathroom sinks, kitchen sinks, showers, dishwasher and washing machine can get processed through the SepticJohn incinerator systems. The size of incinerator and recommended holding tank depends on usage and how much wastewater needs to be processed per day.



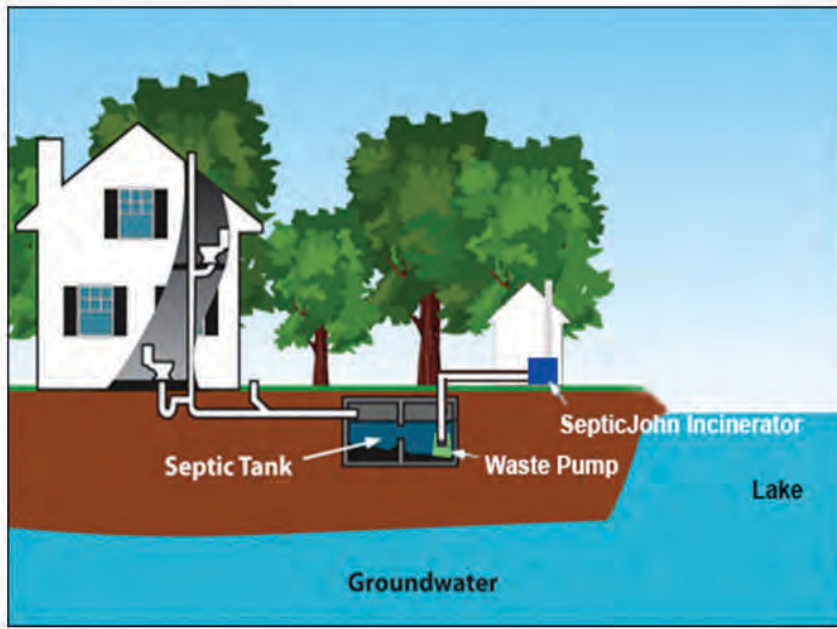
PLC Automation  
with  
Remote Access  
Monitoring

Ecojohn recommends using efficient low flush toilets and showers to conserve water usage and lower the operating time. If one has a way of separating the greywater for filtration and only plumb the black water to the incinerator system or use a recycle shower system, that will cut down the operating hours even more.

A holding tank can be installed in ground or above ground, and an ultrasonic level sensor is installed in the tank to monitor the level. The incinerator has a built-in PLC control system that makes the operation completely automated; it controls when the burner starts and stops, how much it pumps in every batch, when to add a cooling cycle etc. When a certain level in the holding tank has been built-up, a waste transfer pump transfers a batch of waste into the incinerator and the burn cycle commences. This process will continue until the waste tank is empty; the incinerator will then set itself in a standby mode and all liquid, waste, paper has been incinerated into a small amount of sterile ash. It is also possible to program the PLC to only operate certain hours of the day, for example, start at 9 pm and stop at 6 am.



## Installation



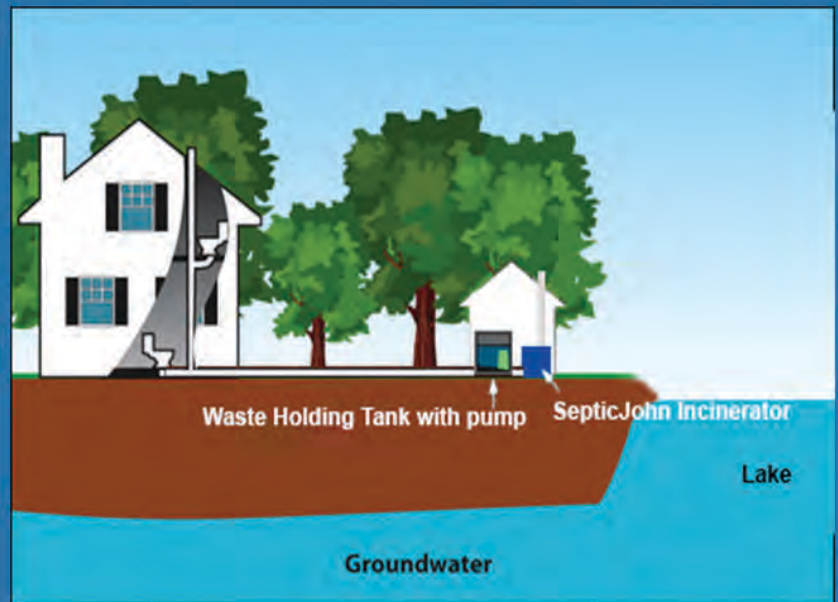
One of many benefits of this system is that it can be installed in areas where septic tanks cannot, i.e. if you own a property too close to a lake, or if the land has a lot of rocks and won't perc, the SepticJohn incinerators can be installed as an alternative.

Compared to a traditional septic system with leach lines, the installation of the SepticJohn system is quick and can be done by a local contractor.

The holding tank/vault can be placed in or above ground, but the incinerator itself has to be installed above ground, such as in a shed, basement, crawl space.

It is important that the incinerator is protected from weather (rain and snow), hence it needs to be in an insulated place if the temperature gets below freezing. A submerged transfer pump is installed inside the holding tank, and the pump can pump up to 300 ft., which means the incinerator building can be away from the house. The pump can go straight into the incinerator or to a secondary holding tank before the incinerator.

The entire process is automated and the PLC will indicate if anything needs to be serviced, i.e. clean out ash, refill fuel.







## How to size the system

In order to size the incinerator and suggested holding tank, it is important to have a good understanding of the usage and how many gallons of wastewater needs to be processed per day. If daily average is 50 gallons, we recommend getting an incinerator model that can handle more than 50 gallons, so in this case, our WC32 or WC48. In addition, a larger holding tank should be installed to provide a little more buffer in case the usage is higher during a few days. Below is a chart that shows recommended incinerator and tank size depending on usage.

## Operating Cost

The incinerator uses minimum electricity during operation, and it requires either propane, natural gas, or diesel/kerosene.

### SEPTICJOHN – ESTIMATED OPERATING COST

| # OF PEOPLE | WASTEWATER | EST. GALLONS/DAY | INCINERATOR | PROPANE COST/DAY | NAT. GAS COST/DAY | DIESEL COST/DAY |
|-------------|------------|------------------|-------------|------------------|-------------------|-----------------|
| 2           | TOILETS    | 12               | WC5         | \$3.48           | \$2.48            | \$4.32          |
| 2           | ALL SEWAGE | 40               | WC32        | \$9.60           | \$6.67            | \$5.87          |
| 4           | TOILETS    | 25               | WC32        | \$6.00           | \$4.17            | \$7.33          |
| 4           | ALL SEWAGE | 80               | WC48        | \$15.80          | \$11.60           | \$19.47         |
| 6           | TOILETS    | 40               | WC32        | \$9.60           | \$6.67            | \$11.73         |
| 6           | ALL SEWAGE | 120              | WC64        | \$19.01          | \$13.82           | \$23.23         |
| 8           | TOILETS    | 100              | WC48        | \$19.75          | \$14.50           | \$24.33         |
| 8           | ALL SEWAGE | 160              | WC64        | \$25.34          | \$18.43           | \$30.98         |

\*The actual operating cost is related to actual usage and local fuel cost and type of fuel.





## Maintenance and Safety

The amount of ash and frequency of ash clean out depends on volumes and usage. If majority of the wastewater is greywater, there will be minimum ash. If there is heavy sludge, there will be more ash. On average, based on a 100-gallon holding tank mixed with black and greywater, there will be about a pint of ash left. The ash is sterile and can easily be disposed of or used as a garden fertilizer.

The incinerator is equipped with many safety controls to ensure a 100% safe product. There are special sensors that shuts the system down if there is an issue such as out of propane, diesel, or if there is a leak in the tray and the collection tray needs to be serviced.



Approval

## Technical Info

| MODEL                     | WC5 Mini                                     | WC5         | WC32        | WC48          | WC64        |
|---------------------------|--|-------------|-------------|---------------|-------------|
| Burnining Capacity        | 10 gal/day                                   | 35 gal/day  | 75 gal/day  | 150 gal/day   | 300 gal/day |
| Propane Consumption       | 0.09 gal/hr                                  | 0.29 gal/hr | 0.48 gal/hr | 0.79 gal/hr   | 1.32 gal/hr |
| Natural gas Consumption   | N/A  | 0.27 gal/hr | 0.44 gal/hr | 0.87 therm/hr | 1.44 gal/hr |
| Diesel Consumption        | N/A  | 0.27 gal/hr | 0.44 gal/hr | 0.73 gal/hr   | 1.21 gal/hr |
| Electrical Consumption    | 4 AmpH @120V AC / 12 AmpH @12V DC            |             |             |               |             |
| Hourly Btu Input (GAS)    | 10,000                                       | 35,000      | 70,000      | 140,000       | 200,000     |
| Hourly Btu Input (Diesel) | N/A  | 56,000      | 84,000      | 126,000       | 168,000     |
| Operating Voltage         | 12V DC / 120V AC / 240V AC                   |             |             |               |             |
| Operating Temperature     | Storage -40 to 140 F / Operation 32 to 140 F |             |             |               |             |
| DIMENSIONS                |  |             |             |               |             |
| Height                    | 25"  | 27"         | 27"         | 27"           | 27"         |
| Width                     | 16"  | 23"         | 24"         | 35"           | 45"         |
| Depth                     | 24"  | 36"         | 46"         | 53"           | 64"         |
| Weight                    | 300 lbs                                      | 450 lbs     | 600 lbs     | 850 lbs       | 1000 lbs    |



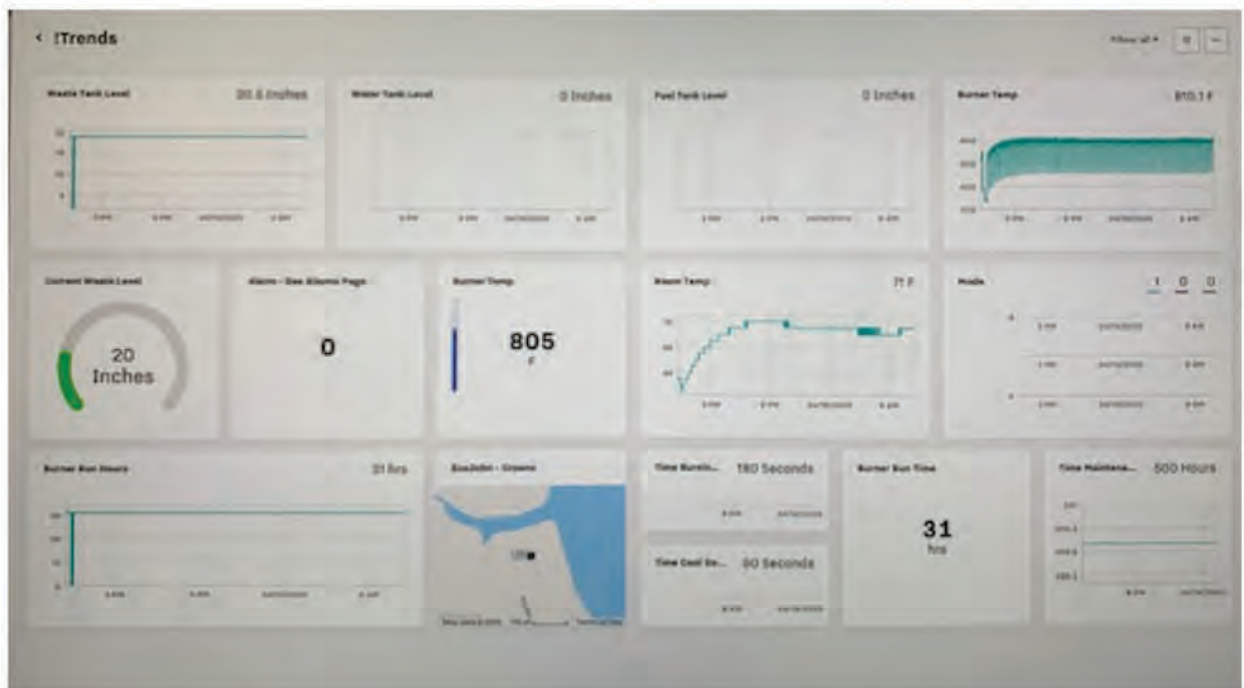
## Support and After Service

Ecojohn has over 30 years of experience in the wastewater incineration industry, and we have a strong support staff that are here to help any customers with tech support and customer service.

Ecojohn is also building out our distribution and service locations, so always check with your dealer for local support.

In case the local dealer doesn't have any parts in stock, Ecojohn can always help. We keep all spare parts in stock and can ship out replacement parts without any lead time.

In addition to the traditional product and technical support, Ecojohn offers a remote monitoring service where we monitor the operation daily and ensure that everything runs 100%. If anything needs to be serviced, we will contact the owner and let them know if anything needs attention, such as refill fuel, clean out ashes.



By monitoring the incinerators remotely, we can ensure our customers that everything operates efficiently. We can send alerts to customers by text or email.



## Q&A

Q Can I use regular fixtures (toilets and showers etc.)?

A Yes, not a problem

Q Can I process all black and grey water?

A Yes

Q Is the system difficult to install and who can install it?

A We recommend using a local contractor; the installation process is very straight forward. Standard plumbing to the holding tank and incinerator, followed by electrical and fuel connections

Q Can the holding tank be in or above ground?

A Yes, either way

Q Where do I install the incinerator?

A It can be installed away from the house; in a shed; in a basement; in a crawlspace etc.

Q Can it be installed in cold climate?

A Yes, but the pipes and holding tank needs to be protected from freezing. This is standard plumbing practice in colder climate areas

Q What size system and tank should I get?

A That is related to the expected usage and what fixtures are being used. Please consult with local dealer or ECOJOHN Support team.

Q How often do I need to clean out the ash, and what do I do with the ash?

A The ash is sterile and can be vacuumed out or used as a garden fertilizer. The frequency for emptying out the ash is also related to usage. On average, in a 4- bedroom home, one needs to clean out the ash about once every two weeks

Q How much does it cost to operate the system?

A Please check estimated operating cost in section "Operating Cost"

Q How long will it last?

A If the system has been operated and serviced per our recommendations, the system should last for 20+ years

Q Is there any emission?

A The system operates very clean and the emission is extremely low; they fall within EPAs standard



ECOJOHN  
**SepticJohn**

6148 Getty Dr  
North Little Rock, AR 72117  
Phone: 501-833-0144  
[www.ecojohn.com](http://www.ecojohn.com)  
[team@ecojohn.com](mailto:team@ecojohn.com)