



## Valley County Board of County Commissioners Invites You to Participate in a PUBLIC HEARING

### **C.U.P. 22-09 Tamarack Resort P.U.D. Osprey Meadows Estates Preliminary Plat**

**Applicant/Owner:** Martin Pico & Tamarack Two LLC

**Location:** 13 acres within Tamarack Resort P.U.D.  
Parts of Parcels RP15N03E052010 and  
RP15N03E051990 in the West ½ Section 5,  
T.15N, R.3E, Boise Meridian, Valley County,  
Idaho

**Project Description:** Martin Pico and Tamarack Two LLC  
are requesting a conditional use permit for 17-lot single-  
family subdivision on 13 acres within the Tamarack Resort  
P.U.D. boundary.

Lots would be accessed from West Mountain Road (public),  
Discovery Drive (private), and a new private road.  
Central sewer and water would be provided.

The plat would include utility, landscape, and recreational  
easement areas. Wetlands are delineated on the preliminary  
plat. Portions of existing trails and golf-court cart path would  
be modified. An Idaho Power easement would be vacated.

The intent is to develop these lots in concert with the  
redevelopment and rehabilitation of the Osprey Meadows  
Golf Course. The area for 15 of the lots was not called out on  
the original PUD as an area for development, but as part of  
the proposed golf course. The applicant is requesting an  
amendment to the PUD to shift existing allowed residential  
use to these lots. It is not a request for an expansion of the  
PUD allowed uses.

The Planning and Zoning Commission recommended  
approval on April 14, 2022.

\*\*\*\*\*

Previous written and emailed comments will be included in  
the record and sent to the Board of County Commissioners.

Maps and the site plan are attached.

**More information, including the  
application and staff report  
will be posted online at:**

**[www.co.valley.id.us](http://www.co.valley.id.us)**

## **PUBLIC HEARING**

**May 23, 2022**

**1:30 p.m.**

**Valley County Courthouse  
2<sup>nd</sup> Floor  
219 North Main Street  
Cascade, Idaho**

You are invited to participate in the  
public hearing and/or comment  
on the proposal.

You may view the hearing by going  
to our website, [www.co.valley.id.us](http://www.co.valley.id.us),  
and click on "Watch Meetings Live".

The meeting is in-person. We no longer  
provide call-in service. This service was  
discontinued by our provider.

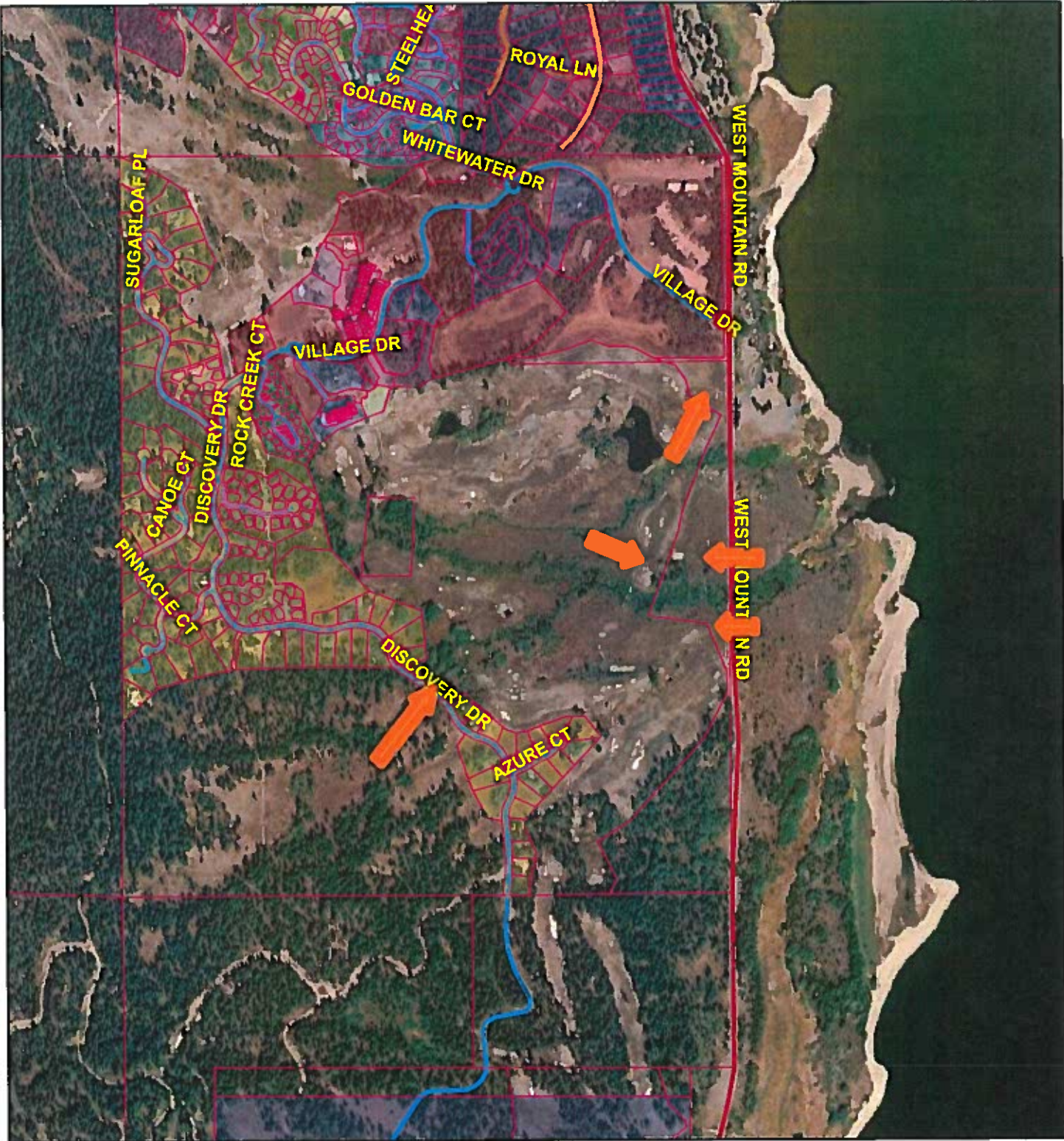
You may comment in person, by U.S.  
Postal Service mail, or by email. Written  
comments greater than one page must  
be received at least seven days prior  
to the public hearing. To be included  
in the staff report, comments must  
be received by  
5:00 p.m., May 16, 2022.

If you do not submit a comment, we will  
assume you have no objections.

### **Direct questions and written comments to:**

Cynda Herrick, AICP, CFM  
Planning & Zoning Director  
PO Box 1350  
Cascade, ID 83611  
208-382-7115 (phone)  
[cherrick@co.valley.id.us](mailto:cherrick@co.valley.id.us)

C.U.P. 22-09 Osprey Meadows Estates



3/7/2022, 4:37:24 PM

- Parcel Boundaries

URBAN/RURAL

PRIVATE

County Boundaries

COLLECTOR

VALLEY COUNTY
- 
- Maxar
- Maxar | Valley County IT | Compiled by the Bureau of Land Management (BLM), National Operations Center (NOC), OC-530 | United States Forest Service Natural Resource Manager (NRM) Infra
- Web AppBuilder for ArcGIS

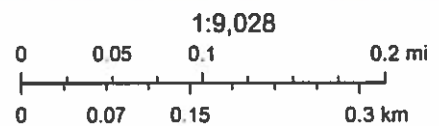


# C.U.P. 22-09 Osprey Meadows Estates



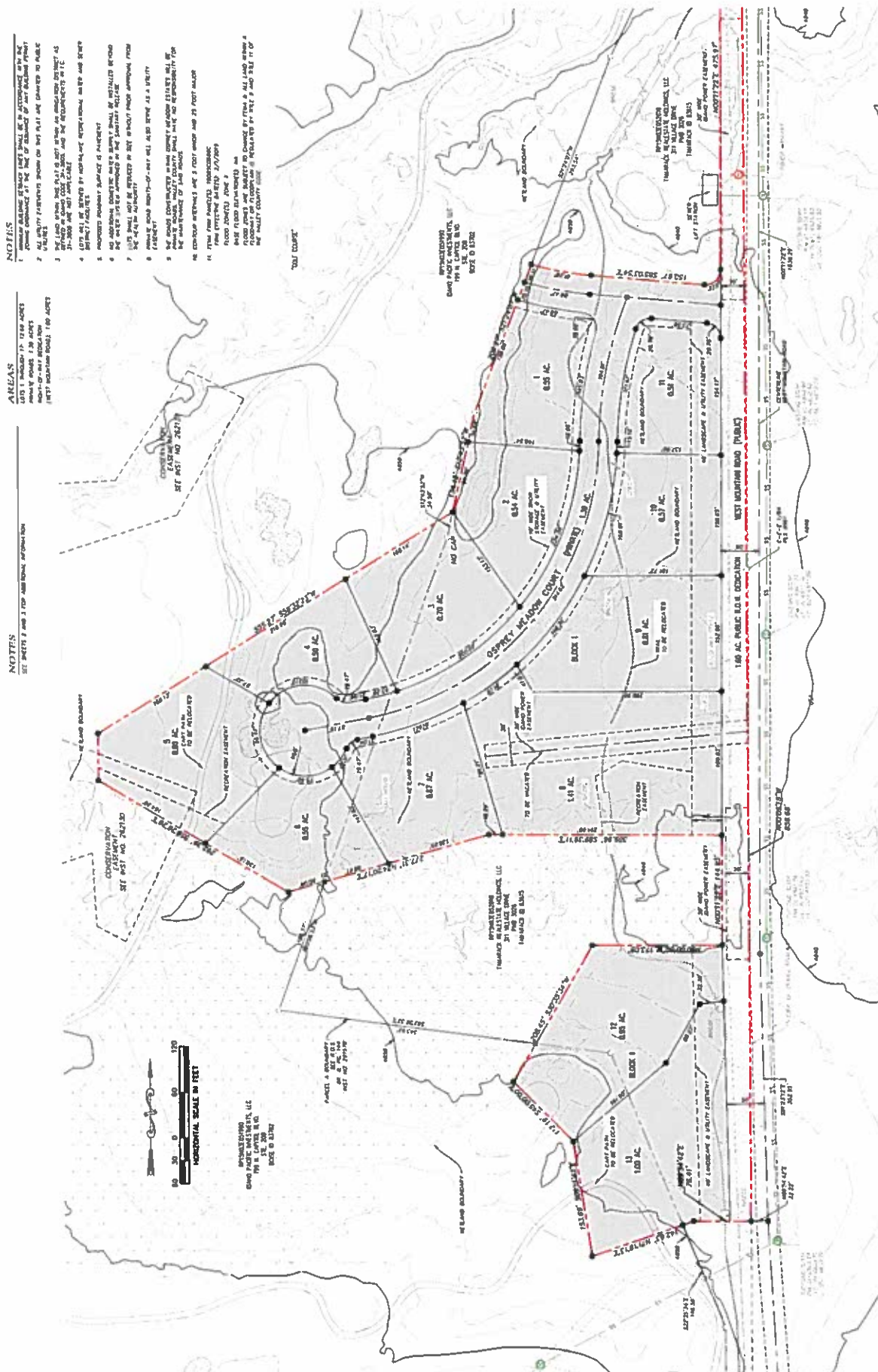
3/7/2022, 4:30:53 PM

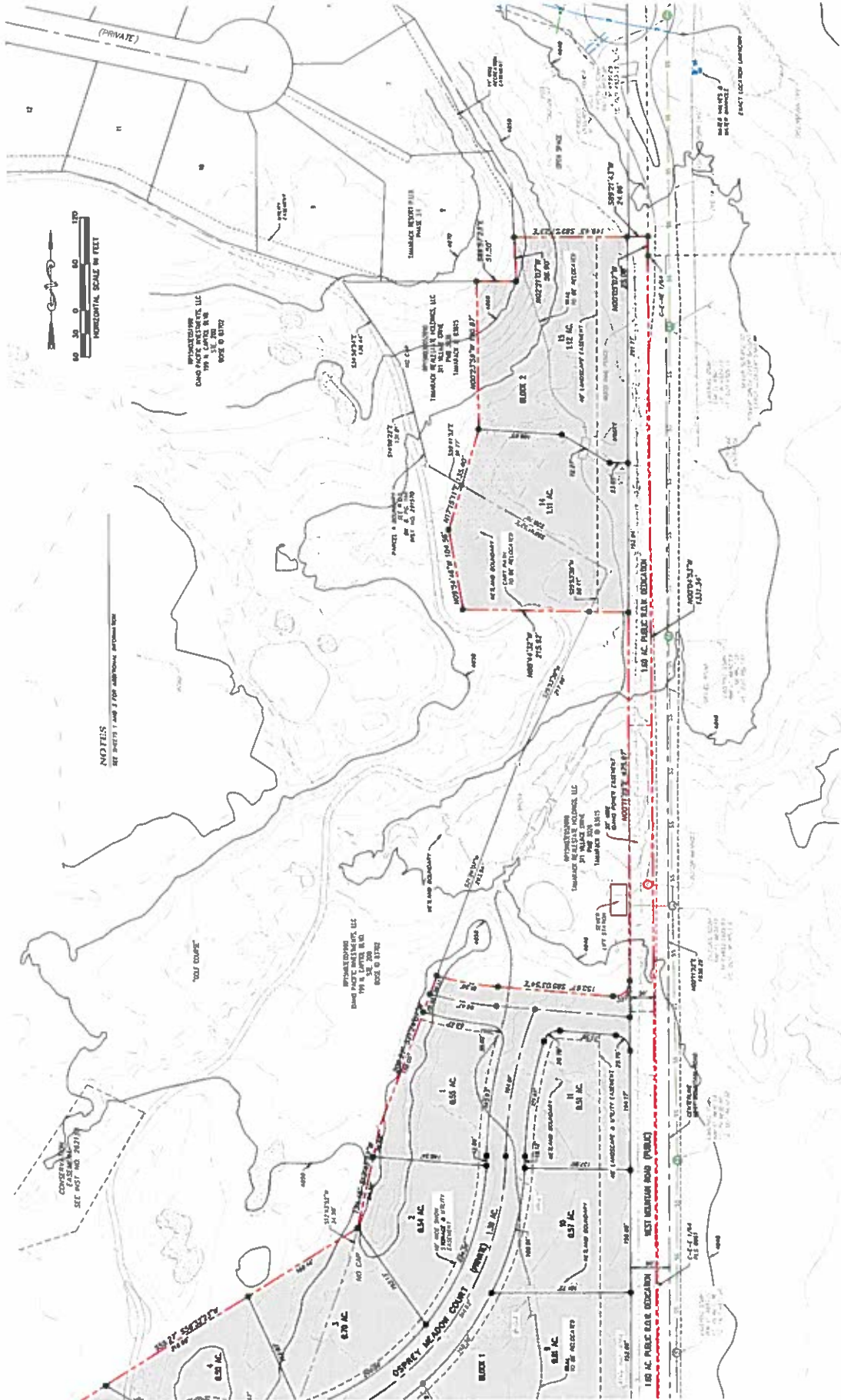
 Parcel Boundaries  PRIVATE  
All Road Labels County Boundaries  
Roads VALLEY COUNTY  
 COLLECTOR



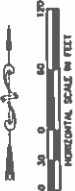
Maxar

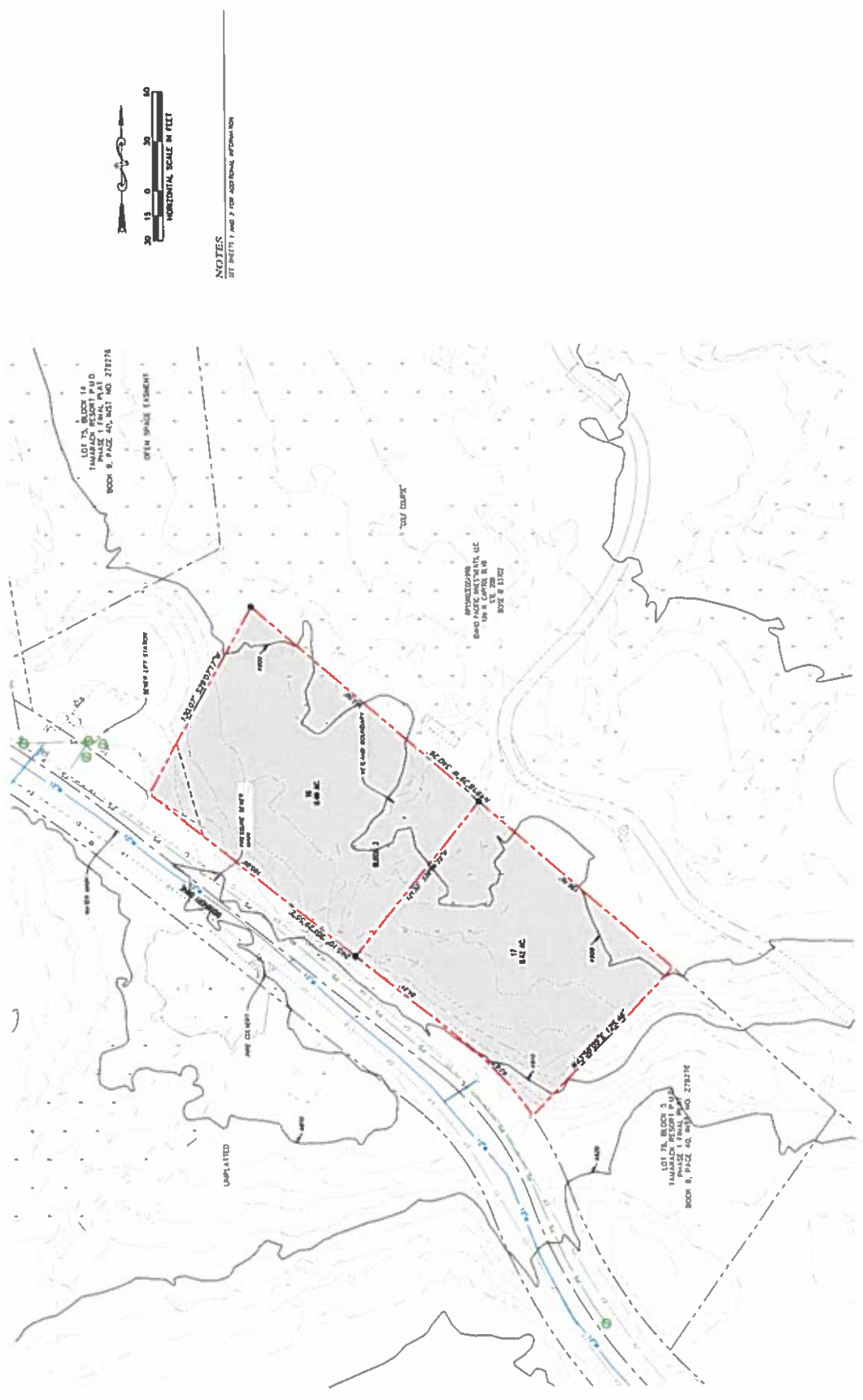






NOTES:  
 SEE SHEETS 1 AND 2 FOR ADDITIONAL INFORMATION





NOTES  
SEE SHEETS 1 AND 2 FOR ADDITIONAL INFORMATION