



200 w. 36th st., boise, idaho 83714 • phone [REDACTED] • fax [REDACTED] • email [REDACTED]

September 27, 2022

Comment Response – CUP 22-34

Valley County Planning and Zoning
219 N Main St.
Cascade, ID 83611

Re: **CUP 22-34 for Shoemaker – Donnelly Storage
Located at TBD, Donnelly, ID 83615**

Dear Cynda,

Please our responses below to your comments dated 9-13-22:

1. Residential uses in Phase 2 will need to be a new conditional use permit. There are no details.
R1. Understood, the timeline and scope for Phase 2 is yet to be determined
2. A lighting plan should be submitted.
R2. Please see the attached photometric and lighting spec sheet.
3. A fencing plan should be submitted; what does the fencing look like?
R3. Fencing is not proposed on this project.
4. What do buildings look like? Materials, colors, ect. Do you have renderings?
R4. Please see the attached elevations on sheet A-4.0 and renderings.

Please contact our office with any questions you may have in reviewing the application materials.

Sincerely,

Jeff Hatch, AIA LEED AP

HATCH DESIGN ARCHITECTURE











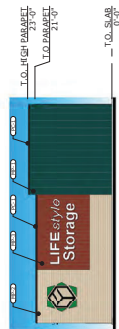


EXTERIOR FINISH SPECIFICATIONS

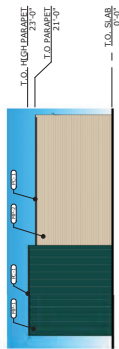
- | | |
|--|--|
| METAL PANEL | MP-1: PROFILE - VERTICAL PBR
COLOR - PERN GREEN
MANUFACTURER: MCCI OR SIMILAR SPEC. |
| MP-2: PROFILE - VERTICAL PBR
COLOR - SADDLE TAN
MANUFACTURER: MCCI OR SIMILAR SPEC. | MP-3: PROFILE - VERTICAL PBR
COLOR - MCCI
MANUFACTURER: MCCI OR SIMILAR SPEC. |
| MP-4: PROFILE - VERTICAL PBR
COLOR - SADDLE TAN
MANUFACTURER: MCCI OR SIMILAR SPEC. | ROOF
RF-1: PROFILE - ULTRA-DEEP
COLOR - GALVALUME
MANUFACTURER: MCCI OR SIMILAR SPEC. |
| METAL GLITTER | GT-1: COLOR - BURNISHED SLATE
MANUFACTURER: MCCI |
| METAL PARADET CAP | PC-1: COLOR - BURNISHED SLATE
MANUFACTURER: MCCI |

GENERAL NOTES

- A.** ALL DOWNSPOUTS TO MATCH EXTERIOR FINISHES.
- B.** PROVIDE "X" CRIMP IN ALL METAL DOOR JAMB PANELS.
- C.** ALL MECHANICAL EQUIPMENT WILL BE GROUND MOUNTED AND SCREENED BY BUILDINGS AND LANDSCAPING. NO ROOFTOP UNITS ARE PROPOSED.



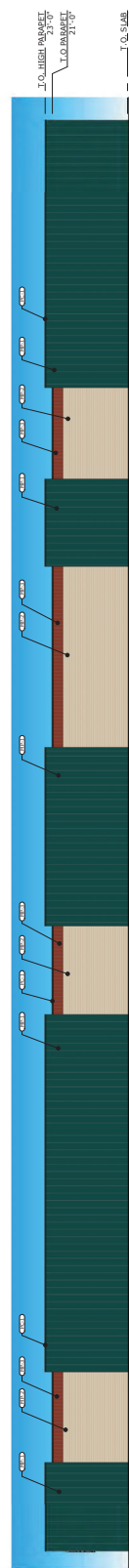
BUILDING A - SOUTH
SCALE: 1/16" = 1'-0"



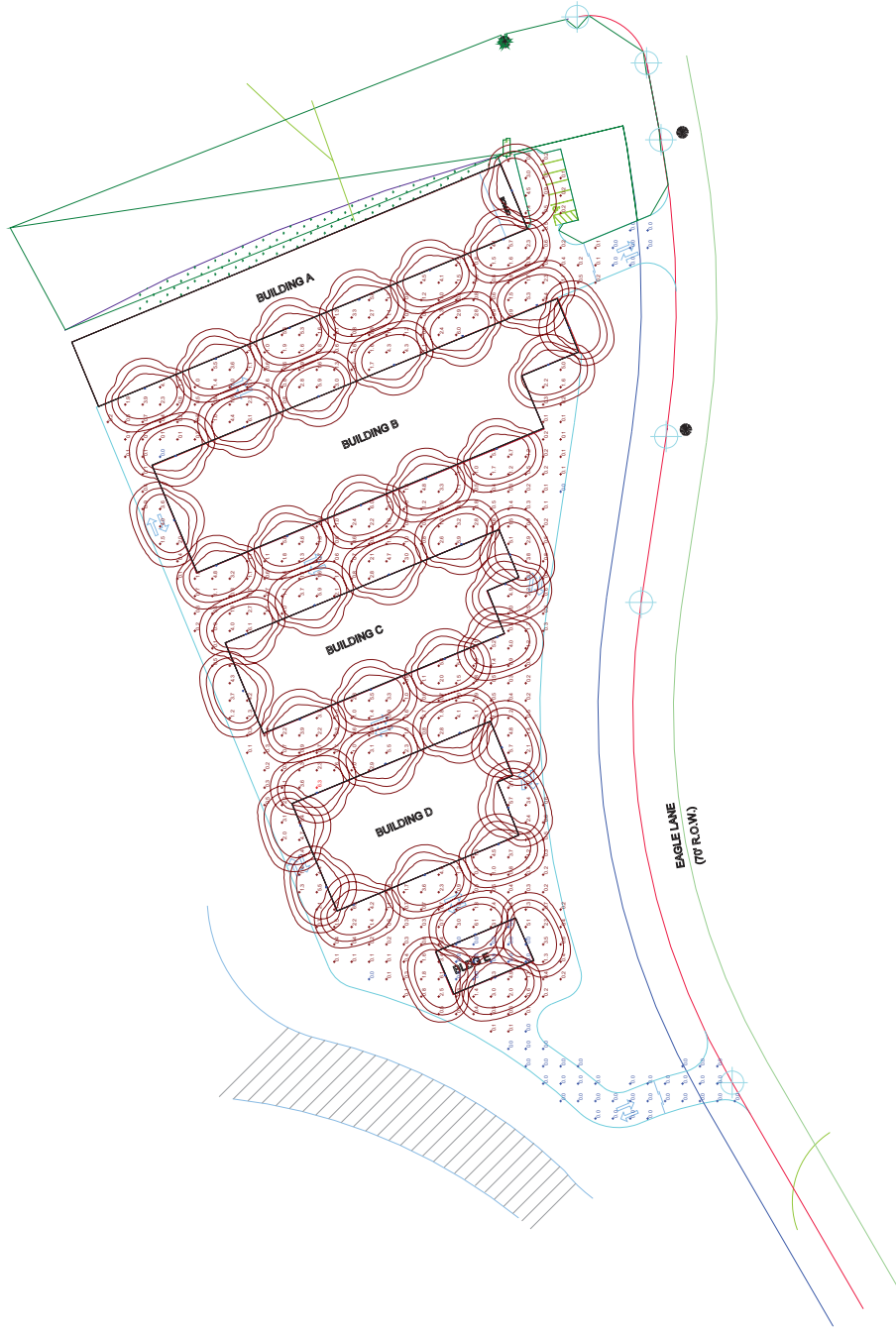
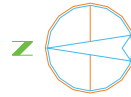
BUILDING A - NORTH
SCALE: 1/2" = 1'-0"



BUILDING A - WEST



BUILDING A - EAST



Statistics					
Description	Symbol	Avg	Max	Min	Max/Min Avg/Min
Calc Zone #1	+	1.5 fc	6.3 fc	0.0 fc	N/A
					N/A

Schedule	Symbol	Label	Image	Qty	Manufacturer	Catalog	Description	Number	Lamp	LLP	Pinout	Polar Plot
		WP		40	Universal Lighting	WPXL LED 406 Pwr3	WPXL LED w/airpak 1000m - 4000K color temperature 120-277Vdc	1	5506	1	4-2-7-7	

[illegible]



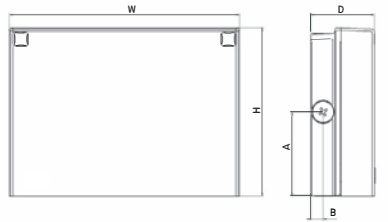
WPX LED Wall Packs



Catalog Number
Notes
Type

Hit the Tab key or mouse over the page to see all interactive elements.

Specifications



Front View

Side View

Luminaire	Height (H)	Width (W)	Depth (D)	Side Conduit Location		Weight
				A	B	
WPX1	8.1" (20.6 cm)	11.1" (28.3 cm)	3.2" (8.1 cm)	4.0" (10.3 cm)	0.6" (1.6 cm)	6.1 lbs (2.8kg)
WPX2	9.1" (23.1 cm)	12.3" (31.1 cm)	4.1" (10.5 cm)	4.5" (11.5 cm)	0.7" (1.7 cm)	8.2 lbs (3.7kg)
WPX3	9.5" (24.1 cm)	13.0" (33.0 cm)	5.5" (13.7 cm)	4.7" (12.0 cm)	0.7" (1.7 cm)	11.0 lbs (5.0kg)

Introduction

The WPX LED wall packs are energy-efficient, cost-effective, and aesthetically appealing solutions for both HID wall pack replacement and new construction opportunities. Available in three sizes, the WPX family delivers 1,550 to 9,200 lumens with a wide, uniform distribution.

The WPX full cut-off solutions fully cover the footprint of the HID glass wall packs that they replace, providing a neat installation and an upgraded appearance. Reliable IP66 construction and excellent LED lumen maintenance ensure a long service life. Photocell and emergency egress battery options make WPX ideal for every wall mounted lighting application.

Ordering Information

EXAMPLE: WPX2 LED 40K MVOLT DDBXD

Series	Color Temperature	Voltage	Options	Finish
WPX1 LED P1	1,550 Lumens, 11W ¹	30K 3000K	MVOLT 120V - 277V	(blank) None
WPX1 LED P2	2,900 Lumens, 24W	40K 4000K	347 347V ³	E4WH Emergency battery backup, CEC compliant (4W, 0°C min) ²
WPX2 LED	6,000 Lumens, 47W	50K 5000K	E14WC Emergency battery backup, CEC compliant (14W, -20°C min) ²	PE Photocell ³
WPX3 LED	9,200 Lumens, 69W			

Note: The lumen output and input power shown in the ordering tree are average representations of all configuration options. Specific values are available on request.

NOTES

1. All WPX wall packs come with 6kV surge protection standard, except WPX1 LED P1 package which comes with 2.5kV surge protection standard. Add SPD6KV option to get WPX1 LED P1 with 6kV surge protection. Sample nomenclature: WPX1 LED P1 40K MVOLT SPD6KV DDBXD
2. Battery pack options only available on WPX1 and WPX2.
3. Battery pack options not available with 347V and PE options.

FEATURES & SPECIFICATIONS

INTENDED USE

The WPX LED wall packs are designed to provide a cost-effective, energy-efficient solution for the one-for-one replacement of existing HID wall packs. The WPX1, WPX2 and WPX3 are ideal for replacing up to 150W, 250W, and 400W HID luminaires respectively. WPX luminaires deliver a uniform, wide distribution. WPX is rated for -40°C to 40°C.

CONSTRUCTION

WPX feature a die-cast aluminum main body with optimal thermal management that both enhances LED efficacy and extends component life. The luminaires are IP66 rated, and sealed against moisture or environmental contaminants.

ELECTRICAL

Light engine(s) configurations consist of high-efficacy LEDs and LED lumen maintenance of L90/100,000 hours. Color temperature (CCT) options of 3000K, 4000K and 5000K with minimum CRI of 70. Electronic drivers ensure system power factor >90% and THD <20%. All luminaires have 6kV surge protection (Note: WPX1 LED P1 package comes with a standard surge protection rating of 2.5kV. It can be ordered with an optional 6kV surge protection). All photocell (PE) operate on MVOLT (120V - 277V) input.

Note: The standard WPX LED wall pack luminaires come with field-adjustable drive current feature. This feature allows tuning the output current of the LED drivers to adjust the lumen output (to dim the luminaire).

INSTALLATION

WPX can be mounted directly over a standard electrical junction box. Three 1/2 inch conduit ports on three sides allow for surface conduit wiring. A port on the back surface allows poke-through conduit wiring on surfaces that don't have an electrical junction box. Wiring can be made in the integral wiring compartment in all cases. WPX is only recommended for installations with LEDs facing downwards.

LISTINGS

CSA Certified to meet U.S. and Canadian standards. Suitable for wet locations. IP66 Rated. DesignLights Consortium® (DLC) qualified product. Not all versions of this product may be DLC qualified. Please check the DLC Qualified Products List at www.designlights.org/QPL to confirm which versions are qualified. International Dark Sky Association (IDA) Fixture Seal of Approval (FSA) is available for all products on this page utilizing 3000K color temperature only.

WARRANTY

5-year limited warranty. This is the only warranty provided and no other statements in this specification sheet create any warranty of any kind. All other express and implied warranties are disclaimed. Complete warranty terms located at: www.acuitybrands.com/CustomerResources/Terms_and_conditions.aspx.

Note: Actual performance may differ as a result of end-user environment and application. All values are design or typical values, measured under laboratory conditions at 25°C. Specifications subject to change without notice.



COMMERCIAL OUTDOOR

One Lithonia Way • Conyers, Georgia 30012 • Phone: 1-800-705-SERV (7378) • www.lithonia.com
© 2020-2022 Acuity Brands Lighting, Inc. All rights reserved.

WPX LED
Rev. 03/08/22

Performance Data

Electrical Load

Luminaire	Input Power (W)	120V	208V	240V	277V	347V
WPX1 LED P1	11W	0.09	0.05	0.05	0.04	0.03
WPX1 LED P2	24W	0.20	0.12	0.10	0.09	0.07
WPX2	47W	0.39	0.23	0.20	0.17	0.14
WPX3	69W	0.58	0.33	0.29	0.25	0.20

Projected LED Lumen Maintenance

Data references the extrapolated performance projections in a 25°C ambient, based on 6,000 hours of LED testing (tested per IESNA LM-80-08 and projected per IESNA TM-21-11).

To calculate LLF, use the lumen maintenance factor that corresponds to the desired number of operating hours below. For other lumen maintenance values, contact factory.

Operating Hours	50,000	75,000	100,000
Lumen Maintenance Factor	>0.94	>0.92	>0.90

Lumen Output

Luminaire	Color Temperature	Lumen Output
WPX1 LED P1	3000K	1,537
	4000K	1,568
	5000K	1,602
WPX1 LED P2	3000K	2,748
	4000K	2,912
	5000K	2,954
WPX2	3000K	5,719
	4000K	5,896
	5000K	6,201
WPX3	3000K	8,984
	4000K	9,269
	5000K	9,393

Lumen Ambient Temperature (LAT) Multipliers

Use these factors to determine relative lumen output for average ambient temperatures from 0-50°C (32-122°F).

Ambient	Ambient	Lumen Multiplier
0°C	32°F	1.05
5°C	41°F	1.04
10°C	50°F	1.03
15°C	59°F	1.02
20°C	68°F	1.01
25°C	77°F	1.00
30°C	86°F	0.99
35°C	95°F	0.98
40°C	104°F	0.97

HID Replacement Guide

Luminaire	Equivalent HID Lamp	WPX Input Power
WPX1 LED P1	100W	11W
WPX1 LED P2	150W	24W
WPX2	250W	47W
WPX3	400W	69W

Emergency Egress Battery Packs

The emergency battery backup is integral to the luminaire — no external housing or back box is required. The emergency battery will power the luminaire for a minimum duration of 90 minutes and deliver minimum initial output of 550 lumens. Both battery pack options are CEC compliant.

Battery Type	Minimum Temperature Rating	Power (Watts)	Controls Option	Ordering Example
Standard	0°C	4W	E4WH	WPX2 LED 40K MVOLT E4WH DDBXD
Cold Weather	-20°C	14W	E14WC	WPX2 LED 40K MVOLT E14WC DDBXD

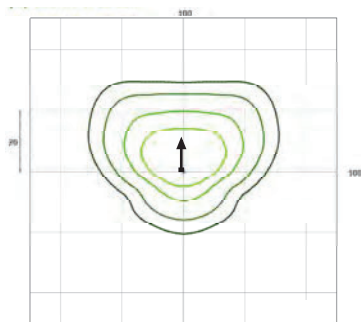
Photometric Diagrams

To see complete photometric reports or download .ies files for this product, visit the Lithonia Lighting [WPX LED](#) homepage. Tested in accordance with IESNA LM-79 and LM-80 standards

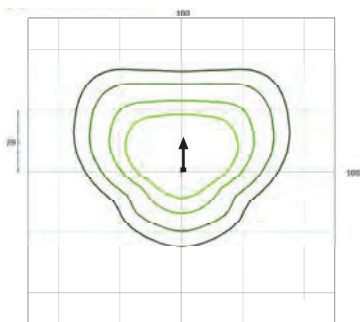
LEGEND

0.1 fc
0.2 fc
0.5 fc
1.0 fc

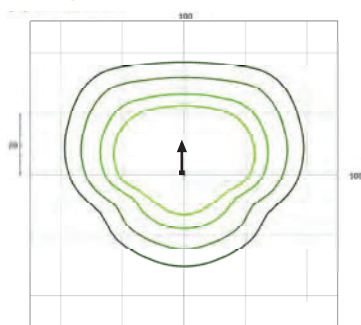
WPX1 LED P1



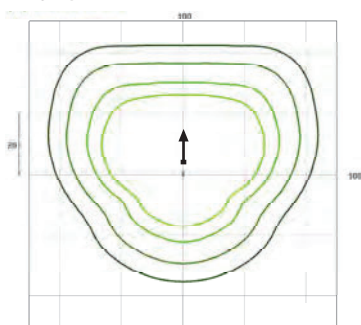
WPX1 LED P2



WPX2 LED



WPX3 LED



Mounting Height = 12 Feet.