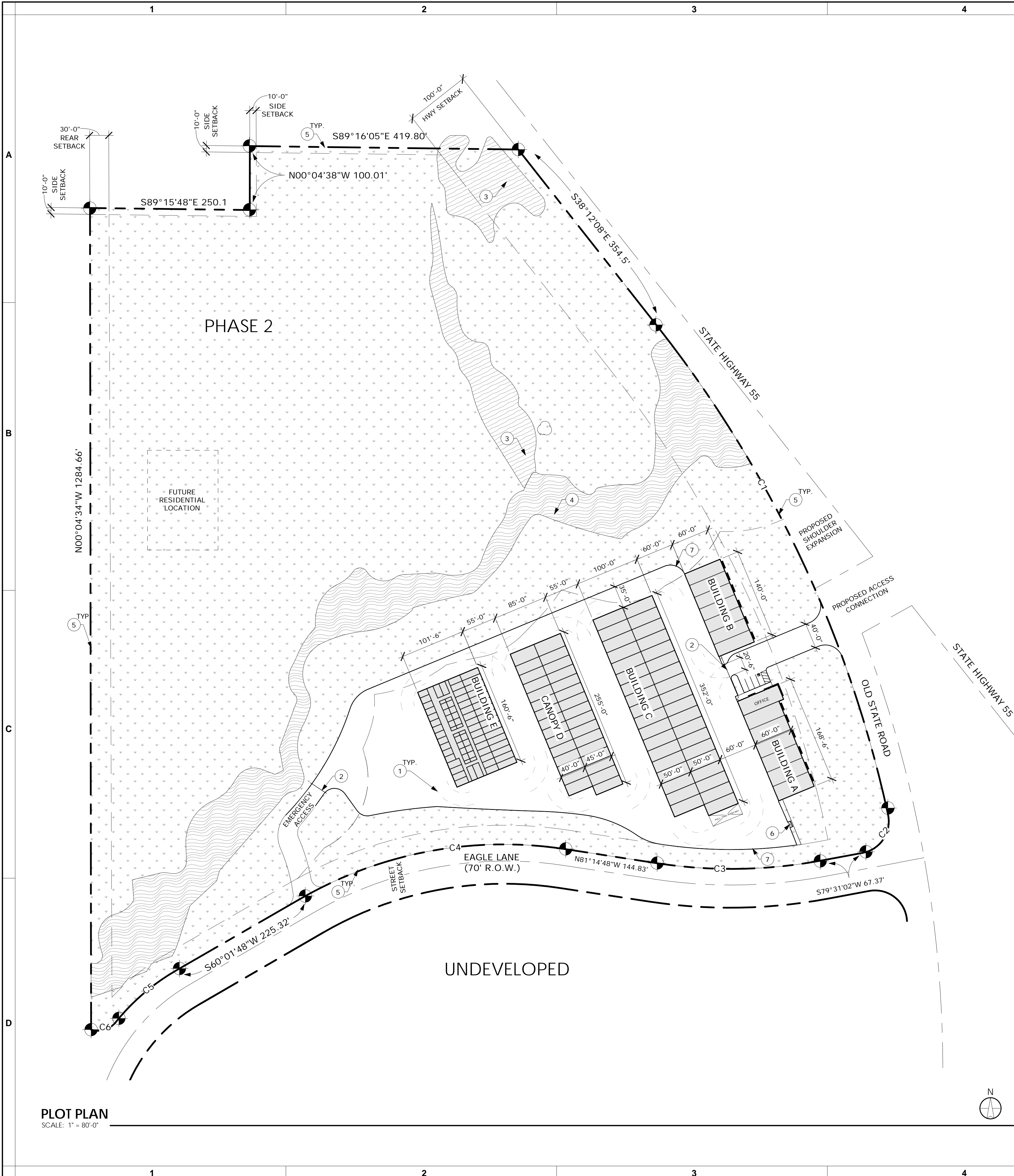


12/7/2022 9:27:55 AM



PLOT PLAN

SCALE: 1" = 80'-0"

CURVE TABLE	
MARK	CHORD
C1	S25°14'38"E 841.79'
C2	S49°21'31"W 124.07'
C3	S79°23'30"W 421.04'
C4	S89°08'07"W 255.63'
C5	S33°36'56"W 71.81'
C6	S73°29'17"W 39.95'

SITE RECAP	
ZONING: MULTIPLE USE	
TOTAL PROJECT SITE: RP16N03E157408 26.967 acres 1,175,518 SF	
PROPOSED BUILDING FOOTPRINT:	
BUILDING A	10,308 SF
BUILDING B	8,400 SF
BUILDING C	34,275 SF
BUILDING E	16,290 SF
CANOPY D	21,075 SF
TOTAL	90,348 SF
SETBACKS:	
FRONT (HWY 55) -	100'-0"
REAR -	30'-0"
SIDE -	10'-0"
STREET (EAGLE LN) -	30'-0"
PARKING:	
REQUIRED: OFFICE- 1 SPACE PER 250 SF 1200 SF / 250 SF = 5 SPACES HC ACCESSIBLE - 1 SPACE	
PROVIDED: HC ACCESSIBLE 1 OF 1 SPACES STANDARD 5 OF 5 SPACES TOTAL 6 OF 6 SPACES	

GENERAL NOTES	
A.	PROPOSED POWER FROM OLD STATE ROAD.

KEYNOTE	
#	DESCRIPTION
1	Fire Turn Radius, 28' Interior Radius and 48' Exterior Radius
2	Lift Arm Access Gate, See Detail XXXX
3	Approximate Wetland Area, Per Wetland Delineation Report
4	Approximate Stream and Adjacent Wetland Area, Per Wetland Delineation Report
5	Property Boundary Line
6	Dump Station, See Civil Drawings
7	Perimeter Fencing, See Detail XXXX

HATCH DESIGN
ARCHITECTURE

200 W. 36TH ST.
BOISE, IDAHO 83714
OFFICE: (208) 475-3204
FAX: (208) 475-3205
HATCH DESIGN
ARCHITECTURE

NOT FOR
CONSTRUCTION

SHOEMAKER - DONNELLY
STORAGE

HWY 55 VALLEY COUNTY, ID

DATE: DECEMBER 2022
DRAWN BY: CA, NL, KR
CHECKED BY: JLH
JOB NUMBER: MKT22

PLOT PLAN

A-1.0

