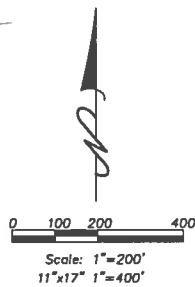
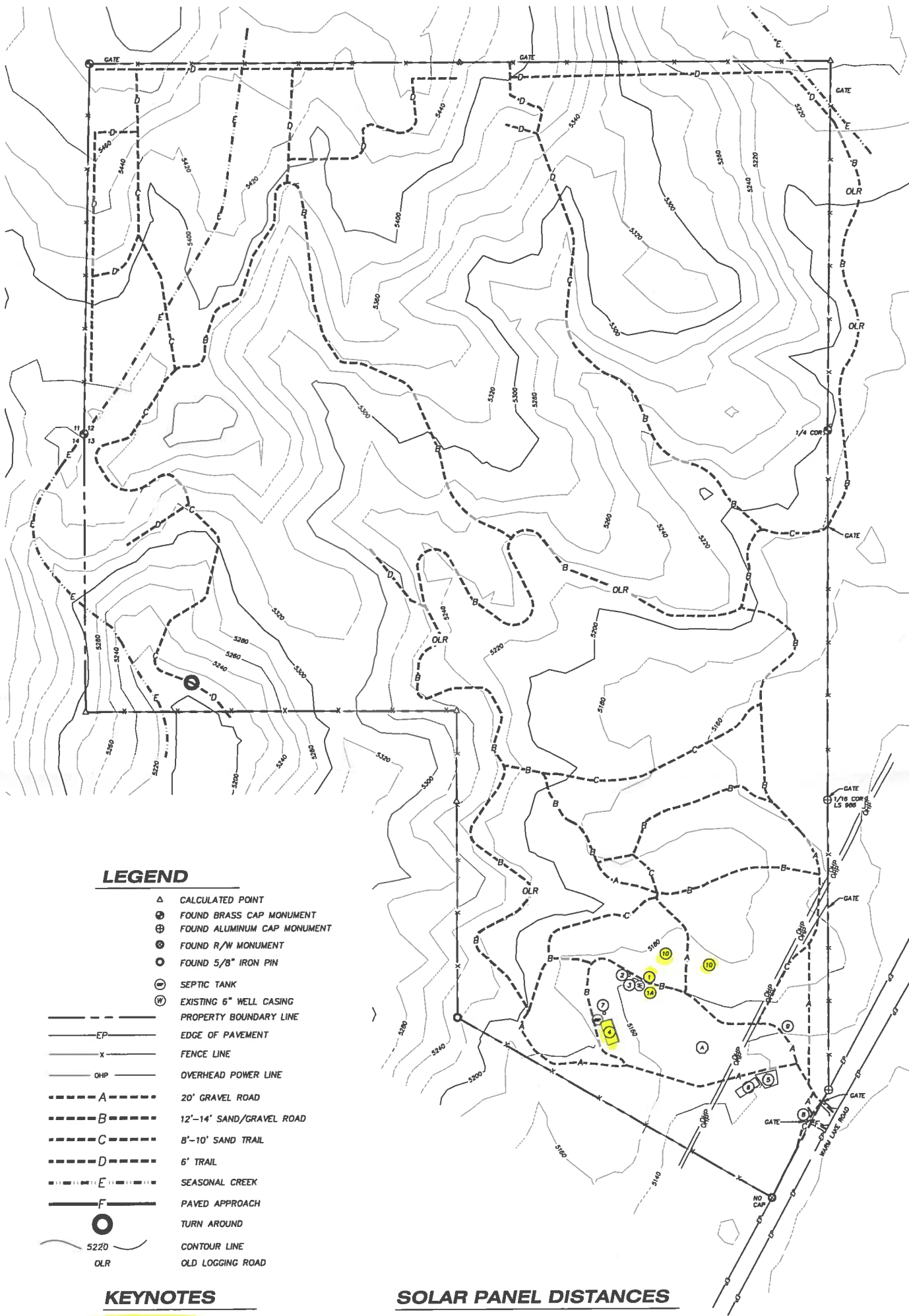


SITE MAP
FOR
730 WARM LAKE ROAD
A PART OF THE NW 1/4, SECTION 13, T. 14 N., R. 4 E., B.M.,
VALLEY COUNTY, IDAHO
2023



DRAWING TITLE:
730 WARM LAKE ROAD
SITE MAP
SHEET NO. 1 OF 1 SHEETS

JOB NO. JY0120
DWG NO. LARGE SCALE
SCALE: Vert: 1"=200' NTS
Horz: NTS
FIELD BOOK NO. [REDACTED]

CLIENT:
MONTEGO PROPERTIES, LLC
3400 S MONTEGO WAY
NAMPA, ID 83686

Mason & Associates
Professional Engineers,
Land Surveyors
& Planners
SINCE 1958

DESIGNED BY:	DB	9/21	NO	BY	DATE	DESCRIPTION
DRAWN BY:	JH	9/21	1	SAP	4/11/23	UPDATE KEYNOTES, DELETE AREA NOTATIONS
CHECKED BY:						
APPROVED BY:						