



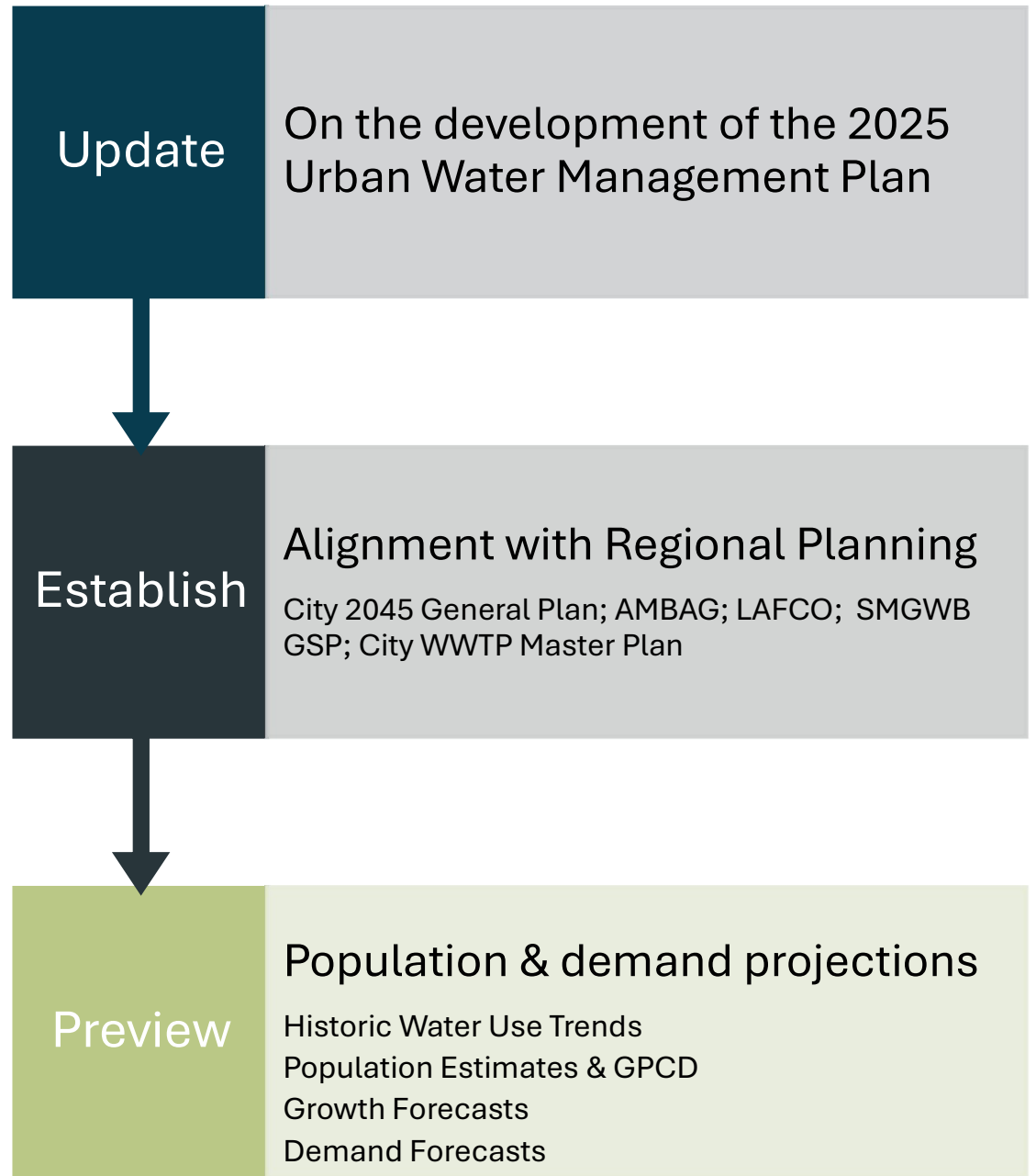
Scotts Valley Water District Board of Directors Meeting

March 12, 2026

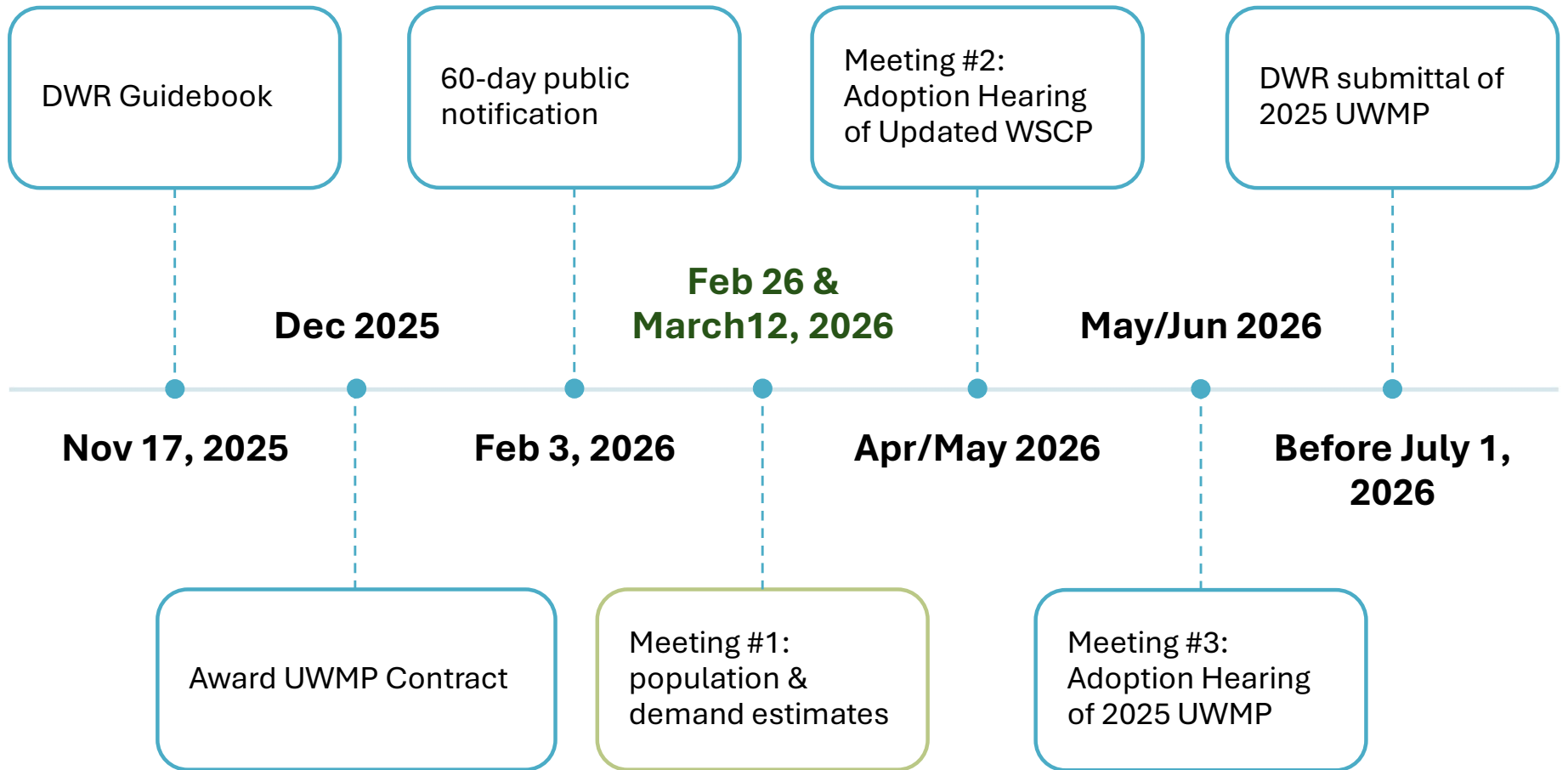
2025 UWMP Update **Population & Demand Projections**



Purpose and Outcome Today



UWMP Schedule & Adoption



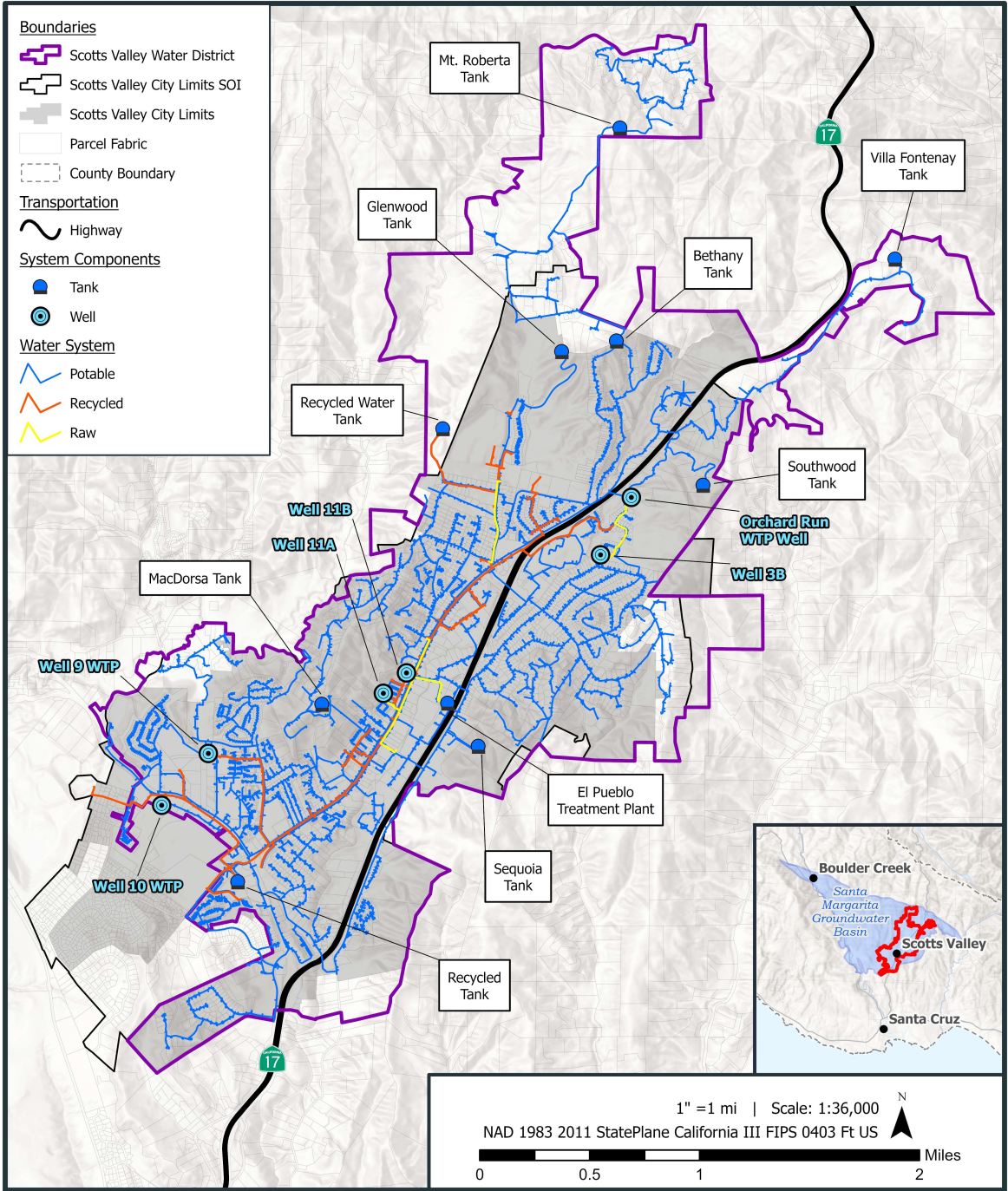
System Overview Map

Potable (3,941 Customers)
 6 Groundwater wells / 4 WTPs
 8 Storage tanks / 11 Zones
 Interties - SLVWD and
 (coming) Santa Cruz

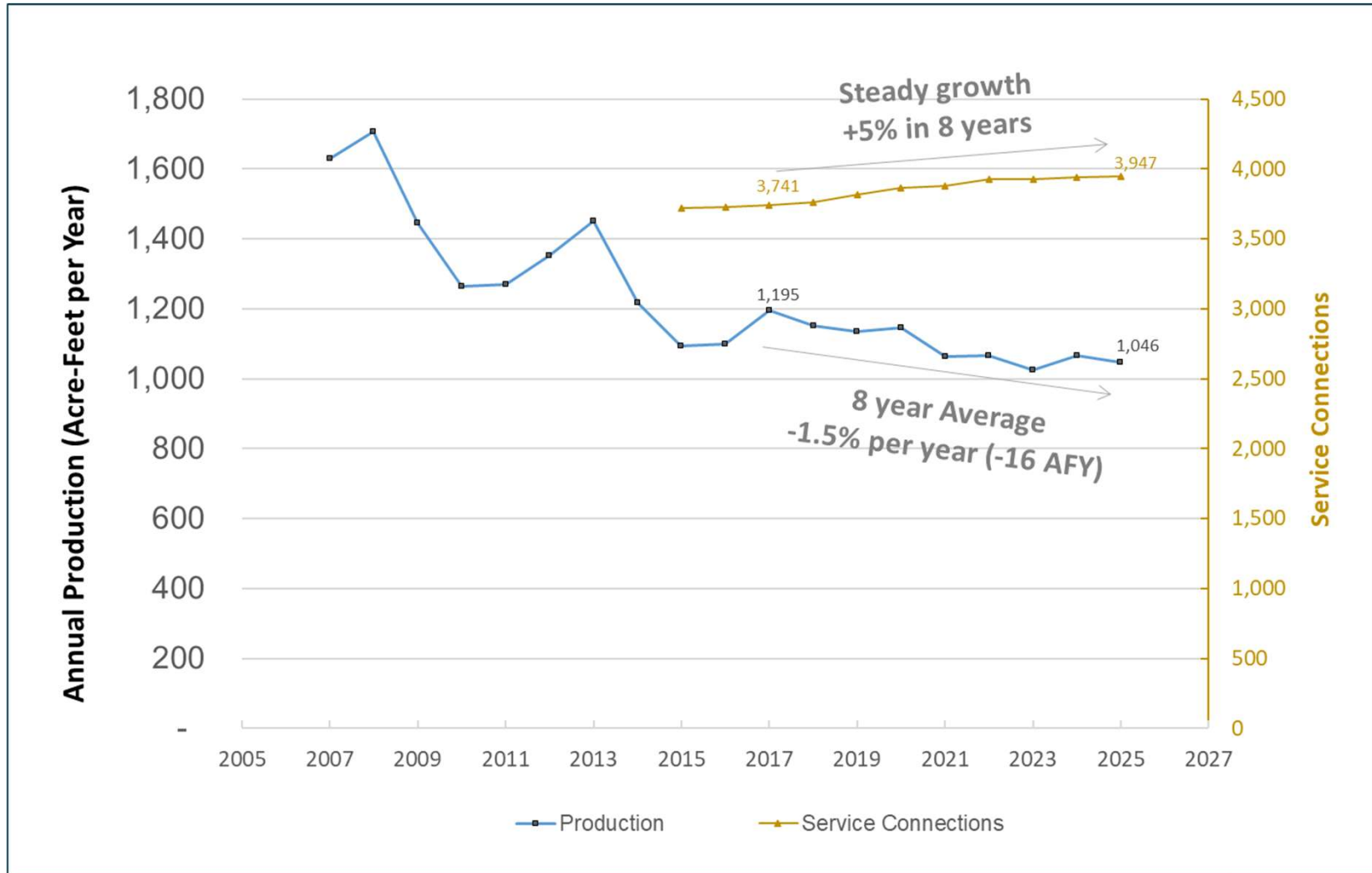
Recycled (82 customers)
 City WRF (Title 22) supply
 9-miles of Purple pipe network

SVWD Boundary vs City
 Boundary (70% overlap)

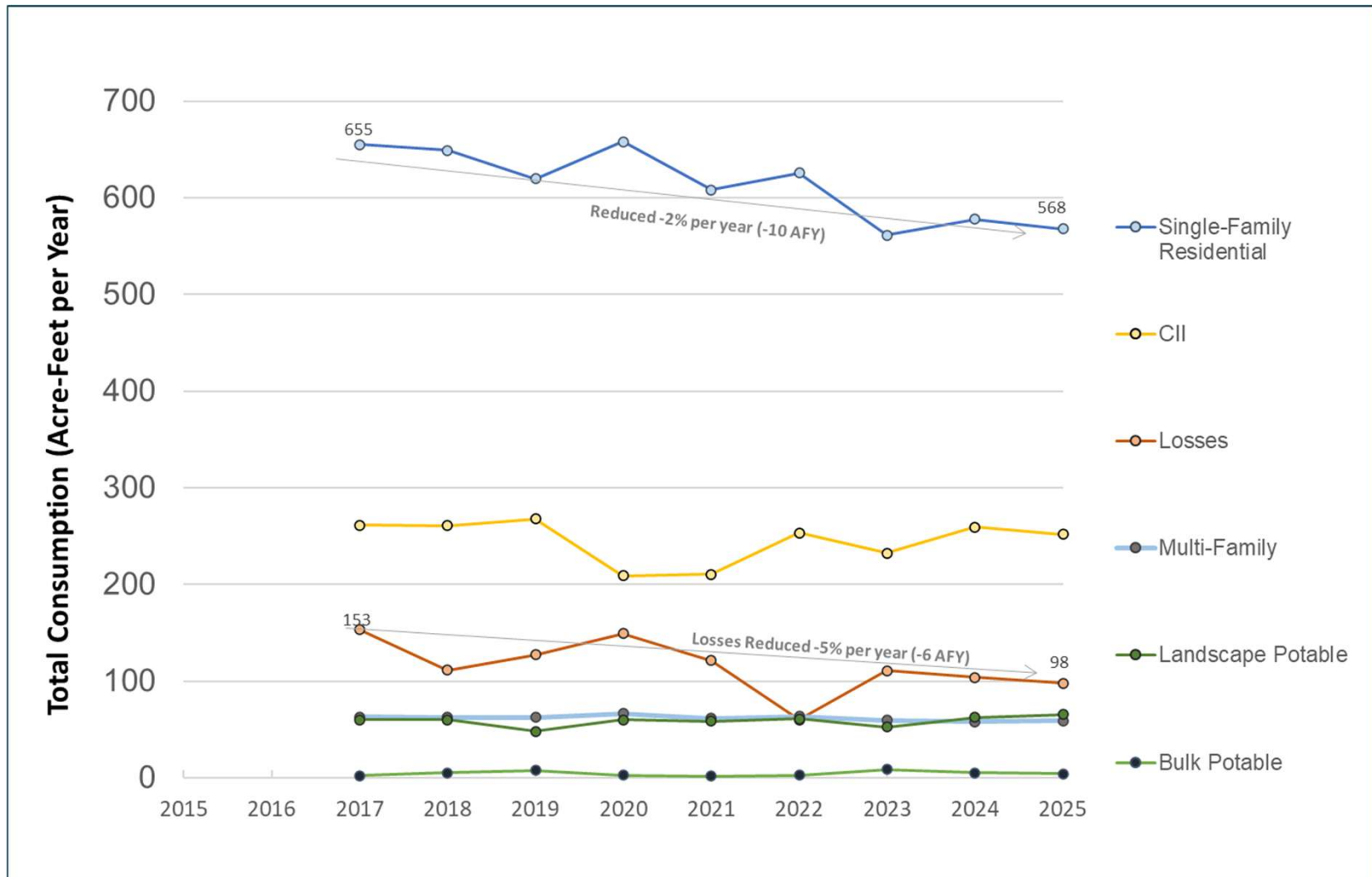
Sphere of Influence – LAFCO
 Updated 4/5/2023



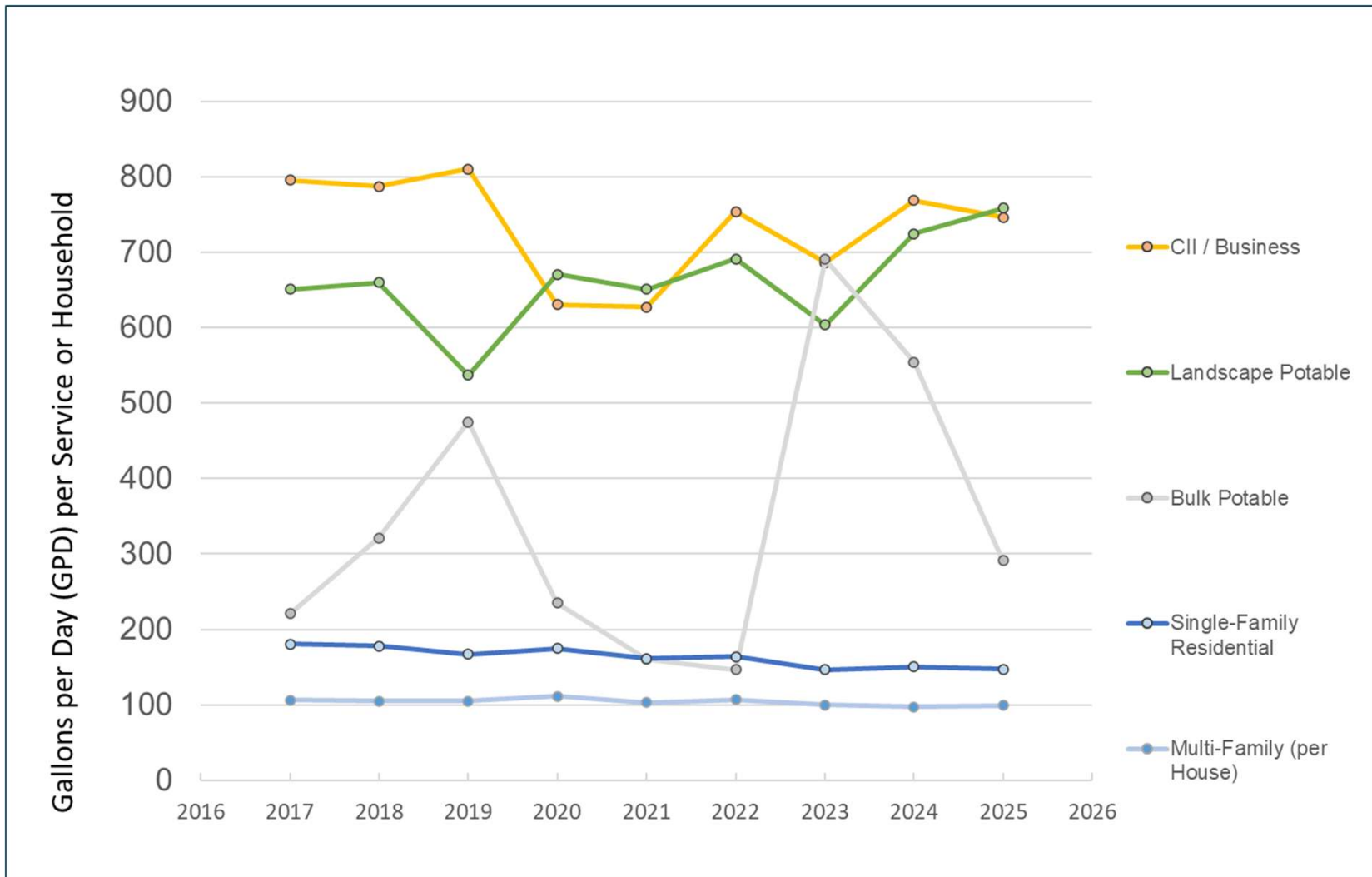
Potable Water - Historic Production



Potable Water - Historic Consumption



Potable Water – Usage per Connection



Potable Water Summary (2017-2025)

Steady decline 1,195 AFY → 1,046 AFY
(~16 AFY or 1.5% per year)

- Reduced Single-Family use (~10 AFY/year)
- Reduced System Losses (~6 AFY/year)

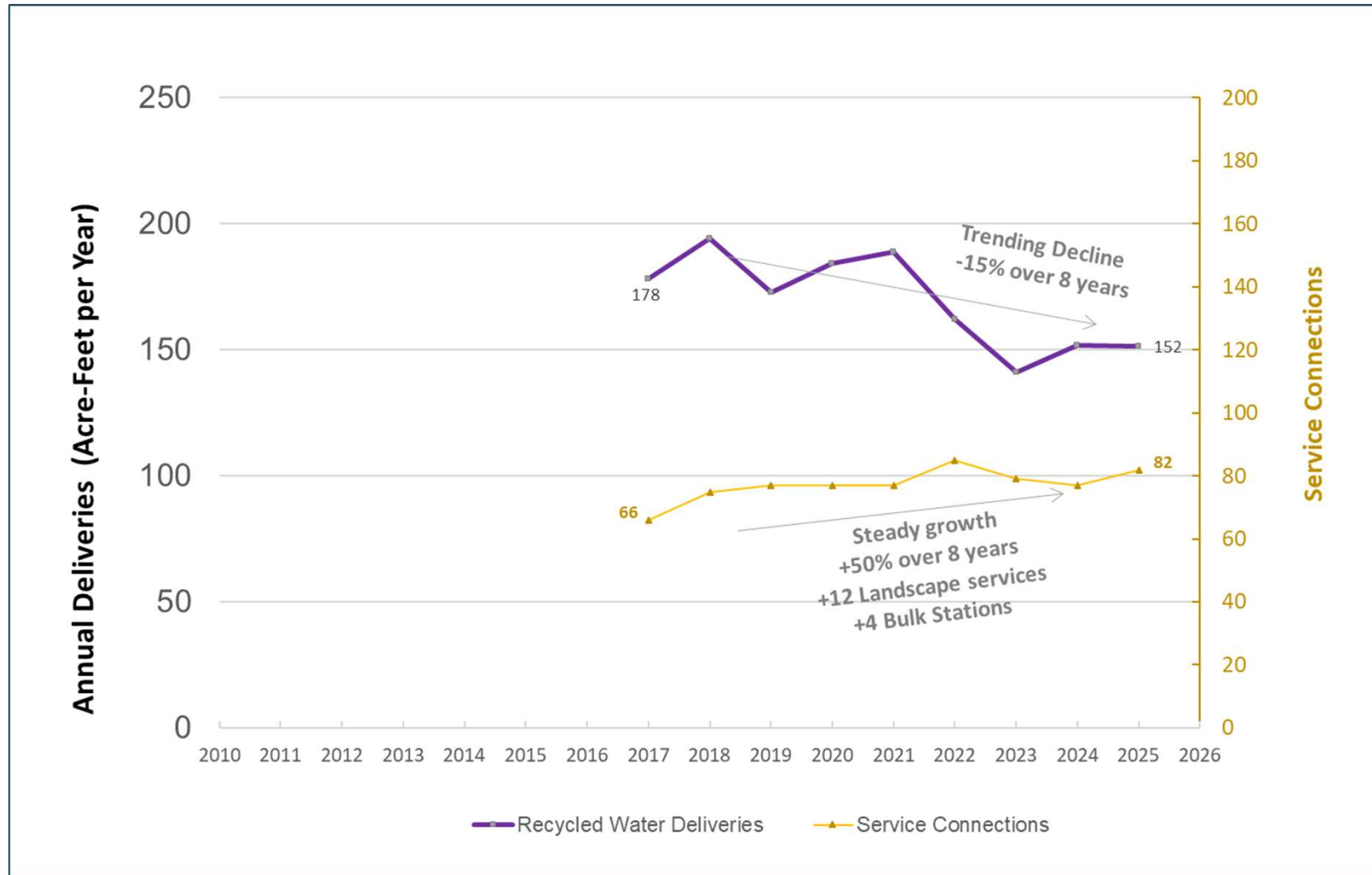
Connections grew 3,741 → 3,947

- Nearly all in Single-Family (+201 units)
- Multi-Family stable (531 units)

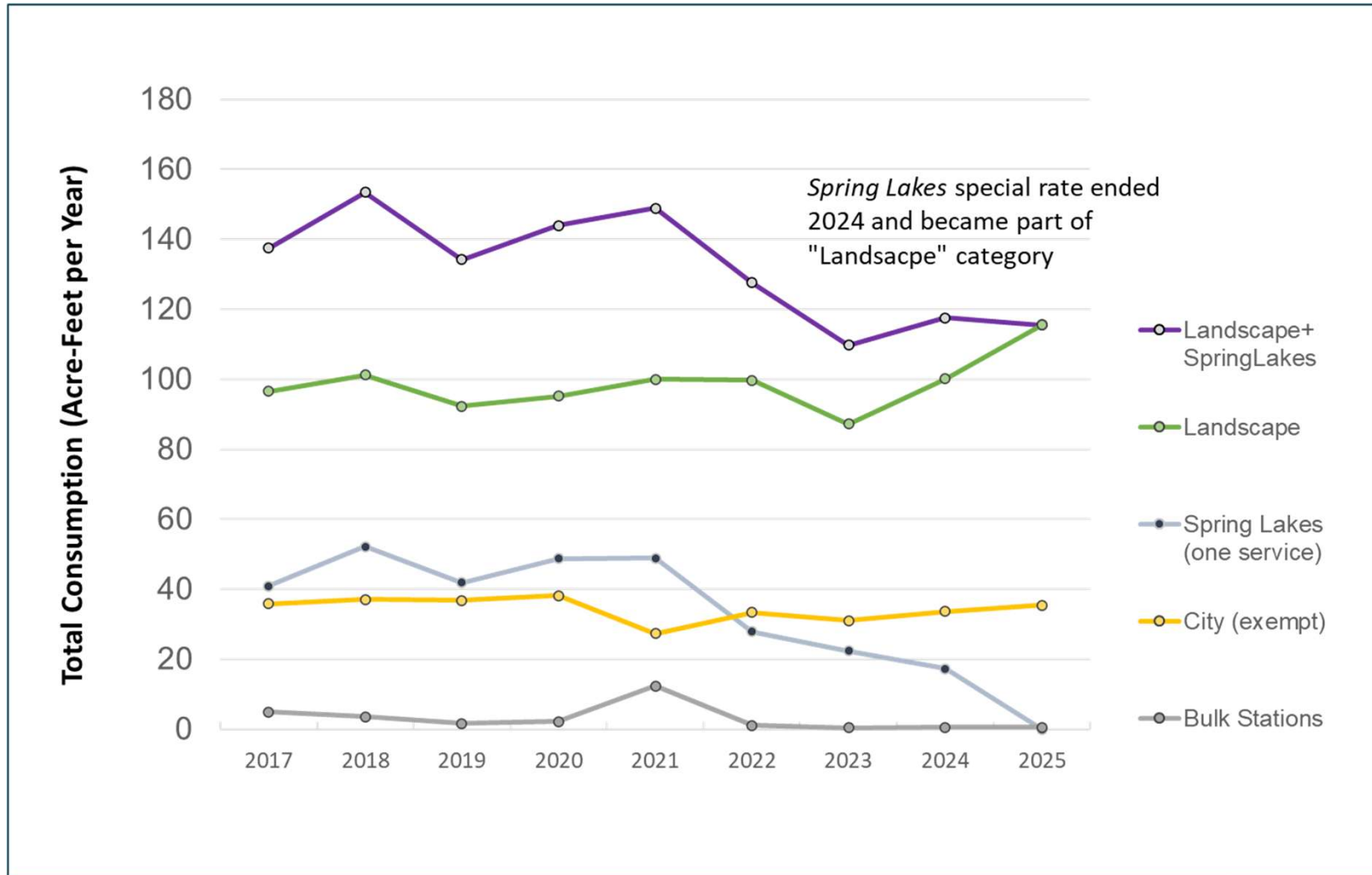
Unit Demand Trends

- Single Family 180 → 147 gpd/house (declined)
- Multi Family ~ 100 gpd/house (steady)

Recycled Water - Historic Trends



Recycled Water - Historic Trends



Recycled Total Consumption 2017-2025

2025 Urban Water Management Plan

Scotts Valley Water District

February 13, 2026

Figure 2(R)

Recycled Water Summary (2017-2025)

Decline 178 AFY → 152 AFY (~3 AFY or 1.8% per year)

- Spring Lakes merged into general Landscape category
- Reductions primarily from Spring Lakes
- City (Exempt) includes 11 services, remained steady (~38 AFY)

Landscape Connections grew 66→82

- Primarily all in Landscape services

Population Estimate Basis

Household sizes (persons-per-household)

Year	General Plan PPH	AMBAG PPH
2015	2.60	2.54
2020	2.64	2.45
2045	2.50	2.19

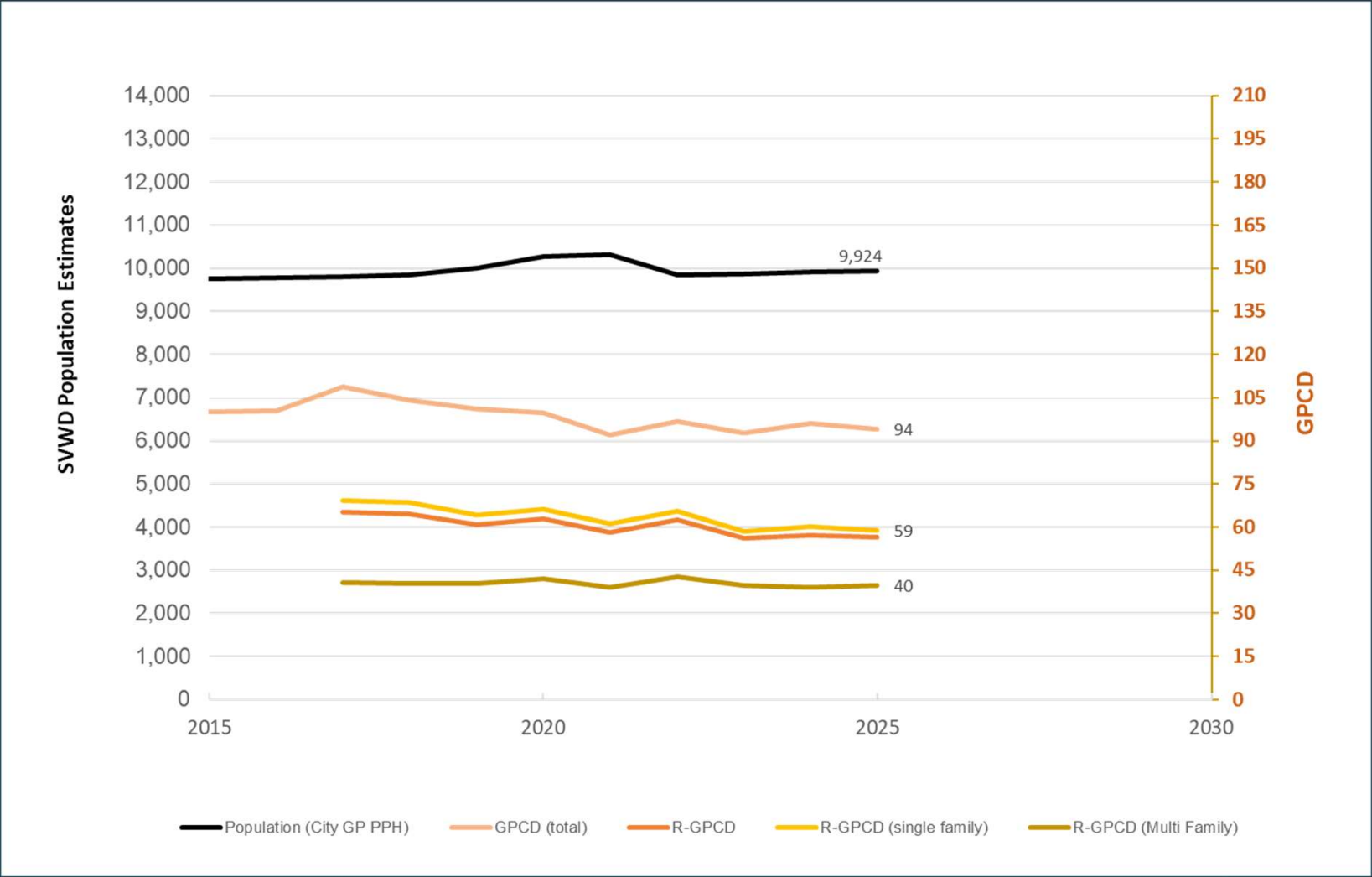
Comments

- General Plan (US Census) vs AMBAG (DOF)
- SVWD 2020: 3,889 homes (3,358 SF; 531MF)
10,276 @ 2.64 PPH; 9,513 @ 2.45 PPH

Recommendation

- Use General Plan (US Census)
- Higher future population; more conservative for planning; aligns with City planning.

SVWD Population Estimates and GPCD



Growth & Planning Context

City General Plan Overview (2020–2045)

- Households add 1,461 units (1.3% per year)
- Population add 3,011 (1.0% per year)
- Mixture of high-to-medium density housing
- Some commercial

Housing Element Overview (2023-2031)

- RHNA targets add 1,220 units by 2031
- Designated “Candidate Sites”
- Mostly served by SVWD
- Situated near Recycled water main

Population Growth Basis

Year	2020	2025	2045	2050
Growth Stage	<i>historic</i>	<i>Current</i>	<i>City General Plan</i>	<i>Beyond General Plan</i>
City of Scotts Valley				
Housing Units	4,569	--	6,030	--
Population	12,073	--	15,084	--
Persons-per-household	2.64	--	2.50	--
Notes			+25% Population +32% Housing Units (+1,461)	
Scotts Valley Water District				
Housing Units	3,889	3,971	5,159	5,416
Population	10,276	9,924	12,905	13,548
Persons-per-Household	2.64	2.50	2.50	2.50
Notes			+32% Housing Units (+1,270 since 2020) (+1,188 since 2025)	Continue same rate of growth (+1%/year)
Population Comparison				
2020 UWMP	10,582	11,082	13,082	n/a

Future Water Use

Historic Trends

- SF declining steadily: 69 to 59 GPCD
- MF stable and low: 40 GPCD
- CII about 22% total production
- Losses about 10% total production

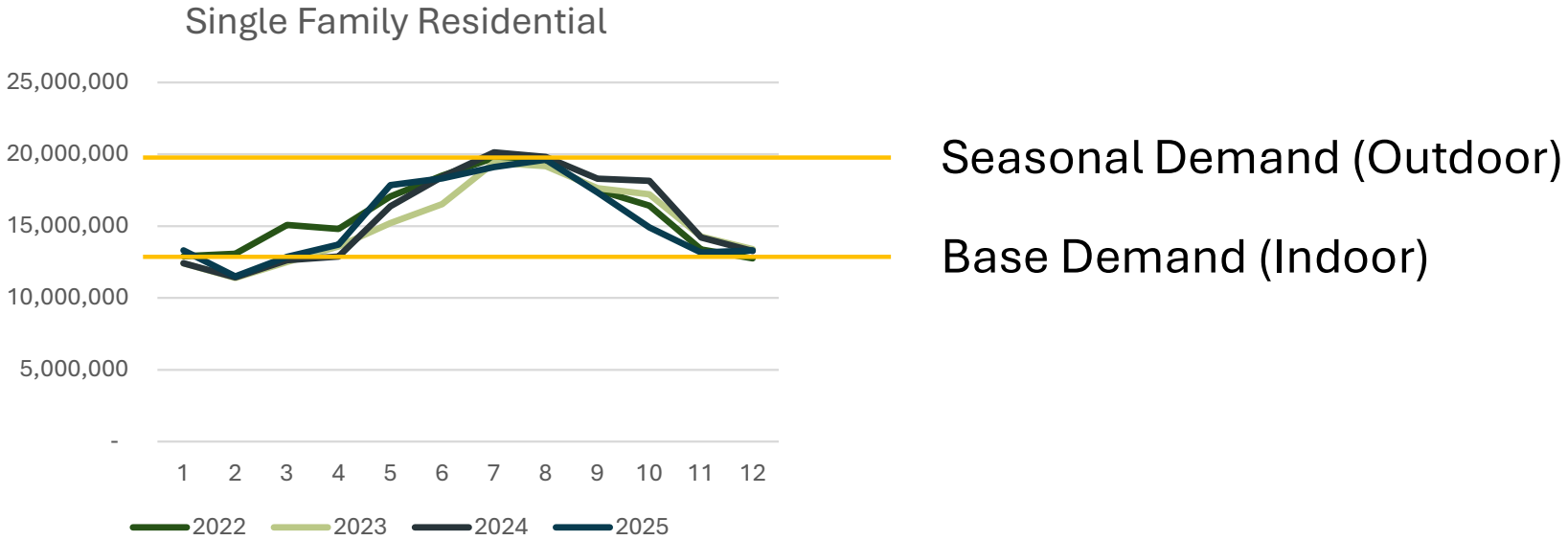
Future Conservation & Regulations

- Indoor Regulation: 47→42 GPCD (2030)
- Urban Water Use Objectives
- Outdoor CII prohibitions (AB 1572)

New Growth Housing Characteristics

- Mostly high-density (similar to MF)
- Access to Recycled Water

Single Family – Seasonal Usage



Base Demand (Indoor)	Seasonal Demand (Outdoor)	Total Demand
~ 13 MG per month	7 MG PEAK month	13 – 20 MG per month
~ 155 MGY (477 AFY)	~ 31 MGY (95 AFY)	~ 186 MGY (573 AFY)
~ 49 GPCD	~ 10 GPCD	~ 59 GPCD

Reducing to 42 GPCD

Factor for new housing
Recycled Water

Future Mix 52 GPCD

Demand Projections

Scenario	Single Family	Multi-Family	CII	Landscape	Bulk/Other	Losses	Total
Actual 2025 (pop 9,924)							
GPCD	59	40	22	5	0.5	(9% prod)	94
Total (AFY)	568	59	252	65	5	98	1,046
2050 Base Customer (pop 9,924)							
GPCD	52	40	20	5	0.5	(7% prod)	83
Total (AFY)	501	59	222	65	5	73	925
2050 New Growth (pop +3,625)							
GPCD	42	0	20	0	0.5	(5% prod)	66
Total (AFY)	171	0	83	0	2	13	268
2050 Combined (pop 13,458)							
GPCD	49	40	20	4	0	(7% prod)	79
Total (AFY)	671	59	305	65	6	86	1,193

Conclusions

1. Population Growth
 - 37% growth in 25 years
 - 9,924 to 13,548
2. Demand Increase
 - 25% in 25 years
 - 1,046 AFY to 1,193 AFY
3. Gross Per Capita Improvement
 - 17% reduction
 - 94 GPCD to 79 GPCD
4. Comparable to 2020 UWMP
 - 1,144 AFY by 2045
(2020 UWMP)
 - 1,193 AFY by 2050
(2025 UWMP)

Thank You